

Anti-DDB1 antibody (C-Term) (STJ116218)

STJ116218

GENERAL INFORMATION

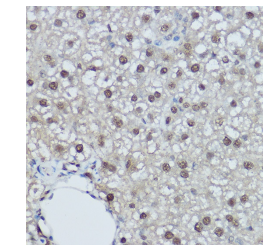
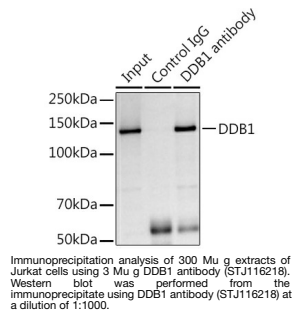
Product Type	Primary antibodies
Short Description	
Applications	WB/IHC-P/IP/ELISA
Host/Source	Rabbit
Reactivity	Human/Mouse/Rat

PRODUCT PROPERTIES

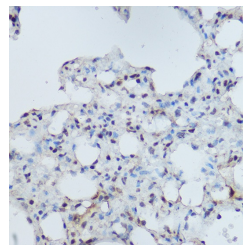
Clonality	Polyclonal
Clone ID	
Concentration	Lot specific
Conjugation	Unconjugated
Purification	Affinity purification
Dilution	WB:1:500-1:2000
Range	IHC-P:1:100-1:500 IP:0.5 Mu g-4 Mu g antibody for 200 Mu g-400 Mu g extracts of whole cells ELISA:Recommended starting concentration is 1 Mu g/mL. Please optimize the concentration based on your specific assay requirements
Formulation	PBS with 0.02% Sodium Azide, 50% Glycerol, pH 7.3.
Isotype	IgG
Storage	Store at-20°C for up to 1 year from the date of receipt, and avoid repeat freeze-thaw cycles.
Instruction	

TARGET INFORMATION

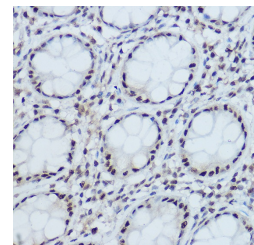
Gene ID	1642
Gene Symbol	DDB1
Uniprot ID	DDB1_HUMAN
Immunogen	
Immunogen Region	C-Term
Specificity	A synthetic peptide corresponding to a sequence within amino acids 1000-1140 of human DDB1 (NP_001914.3).
Immunogen Sequence	LGEFVNVFCHGSLVMQNLGE TSTPTQGSVLFGTVNGMIGL VTSLSESWYNLLLDQMQRNLN KVIKSVGKIEHSFWRSFHTERKTEPATGFDGLIESFLD ISRPKMQEVVANLQYDDGSG MKREATADDLIKWHEELTRI H



Immunohistochemistry analysis of DDB1 in paraffin-embedded rat liver using DDB1 Rabbit polyclonal antibody (STJ116218) at dilution of 1:300 (40x lens). Perform high pressure antigen retrieval with 10 mM citrate buffer pH 6.0 before commencing with immunohistochemistry staining protocol.



Immunohistochemistry analysis of DDB1 in paraffin-embedded mouse lung using DDB1 Rabbit polyclonal antibody (STJ116218) at dilution of 1:300 (40x lens). Perform high pressure antigen retrieval with 10 mM citrate buffer pH 6.0 before commencing with immunohistochemistry staining protocol.



Immunohistochemistry analysis of DDB1 in paraffin-embedded human colon using DDB1 Rabbit polyclonal antibody (STJ116218) at dilution of 1:300 (40x lens). Perform high pressure antigen retrieval with 10 mM citrate buffer pH 6.0 before commencing with immunohistochemistry staining protocol.

This product is suitable for in-vitro studies under the RESEARCH USE ONLY [RUO] licence. This product must not be used as for diagnostic or other medical purposes.
St John's Laboratory Ltd, Knowledge Dock Business Centre, University Way, London, E16 2RD | Tel: 0208 223 3081