

Anti-ANO2 antibody (1-200) (STJ116212)

STJ116212

GENERAL INFORMATION

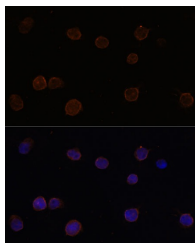
Product Type	Primary antibodies
Short Description	
Applications	WB/IF/ICC/ELISA
Host/Source	Rabbit
Reactivity	Human/Mouse/Rat

PRODUCT PROPERTIES

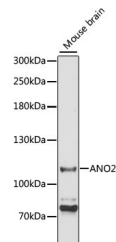
Clonality	Polyclonal
Clone ID	
Concentration	Lot specific
Conjugation	Unconjugated
Purification	Affinity purification
Dilution	WB:1:500-1:2000
Range	IF/CC:1:50-1:100
	ELISA:Recommended starting concentration is 1 μ g/mL. Please optimize the concentration based on your specific assay requirements.
Formulation	PBS with 0.01% Thimerosal, 50% Glycerol, pH 7.3.
Isotype	IgG
Storage Instruction	Store at -20°C for up to 1 year from the date of receipt, and avoid repeat freeze-thaw cycles.

TARGET INFORMATION

Gene ID	57101
Gene Symbol	ANO2
Uniprot ID	ANO2_HUMAN
Immunogen	
Immunogen Region	1-200
Specificity	Recombinant fusion protein containing a sequence corresponding to amino acids 1-200 of human ANO2 (NP_001265526.1).
Immunogen Sequence	MPEDIPLLPGPSRRLSPQAG SRGGQGPKHGQQCLKMPGPR APGLQGGSNRDPGQPCGGES TRSSSVINNYLDANEPVSLE ARLSRMHFHDSQRKVDYVLA YHYRKRGVHLAQGFPGHSLA IVSNGETGKEPHAGGPGDIE LGPLDALEERKEQREEFEH NLMEAGLELEKDLENKSQGS IFVRIHAPWQVLAREAEFLK



Immunofluorescence analysis of Y79 cells using ANO2 Rabbit polyclonal antibody (STJ116212) at dilution of 1:100 (40x lens). Secondary antibody: Cy3 Goat Anti-Rabbit IgG (H+L) at 1:500 dilution. Blue: DAPI for nuclear staining.



Western blot analysis of lysates from mouse brain, using ANO2 Rabbit polyclonal antibody (STJ116212) at 1:3000 dilution. Secondary antibody: HRP Goat Anti-Rabbit IgG (H+L) (STJ5000856) at 1:10000 dilution. Lysates/proteins: 25 μ g per lane. Blocking buffer: 3% nonfat dry milk in TBST. Detection: ECL Basic Kit. Exposure time: 90s.

This product is suitable for in-vitro studies under the RESEARCH USE ONLY [RUO] licence. This product must not be used as for diagnostic or other medical purposes.

St John's Laboratory Ltd, Knowledge Dock Business Centre, University Way, London, E16 2RD | Tel: 0208 223 3081