

## Anti-E2F6 antibody (1-281) (STJ116186)

STJ116186

### GENERAL INFORMATION

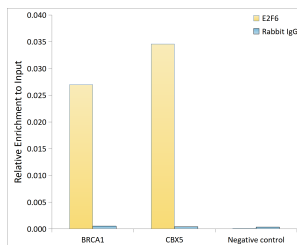
<b>Product Type</b>	Primary antibodies
<b>Short Description</b>	
<b>Applications</b>	WB/IF/ICC/IP/ELISA/ChIP
<b>Host/Source</b>	Rabbit
<b>Reactivity</b>	Human/Mouse

### PRODUCT PROPERTIES

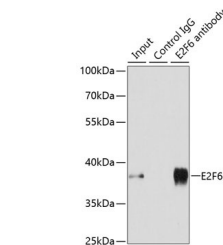
<b>Clonality</b>	Polyclonal
<b>Clone ID</b>	
<b>Concentration</b>	Lot specific
<b>Conjugation</b>	Unconjugated
<b>Purification</b>	Affinity purification
<b>Dilution Range</b>	WB:1:500-1:2000 IF/CC:1:50-1:200
<b>Formulation</b>	IP:0.5 Mu g-4 Mu g antibody for 200 Mu g-400 Mu g extracts of whole cells ELISA:Recommended starting concentration is 1 Mu g/mL. Please optimize the concentration based on your specific assay requirements
<b>Isotype</b>	IgG
<b>Storage Instruction</b>	PBS with 0.02% Sodium Azide, 50% Glycerol, pH 7.3. Store at-20°C for up to 1 year from the date of receipt, and avoid repeat freeze-thaw cycles.

### TARGET INFORMATION

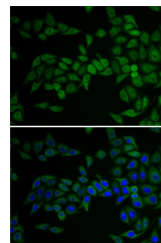
<b>Gene ID</b>	1876
<b>Gene Symbol</b>	E2F6
<b>Uniprot ID</b>	E2F6_HUMAN
<b>Immunogen Region</b>	1-281
<b>Specificity</b>	Recombinant fusion protein containing a sequence corresponding to amino acids 1-281 of human E2F6 (NP_937987.2).
<b>Immunogen Sequence</b>	MSQQRPAKLPKSLLLDPTTEE TVRRRCRDPINVEGLLPSKI RINLEDNVQYVSMRKALKVK RPRFDVSLVYLTRKFMDLVR SPAGGILDNLNKVATKLGVRK RRVYDITNVLGDGLVEKKS KNHIRWIGSDLSNFGAVPQQ KKLQEELSDLSAMEDALDEL IKDCAQLFELTDDKENERL AYYTYQDIHSIQAFHEQIVI AVKAPAEITRLDVPAPREDSI TVHIRSTNGPIDVYLCEVE



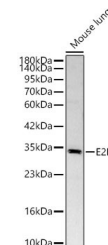
Chromatin immunoprecipitation analysis of extracts of 293T cells, using E2F6 antibody (STJ116186) and rabbit IgG. The amount of immunoprecipitated DNA was checked by quantitative PCR. Histogram was constructed by the ratios of the immunoprecipitated DNA to the input.



Immunoprecipitation analysis of 200 Mu g extracts of MCF-7 cells using 3 Mu g E2F6 antibody (STJ116186). Western blot was performed from the immunoprecipitate using E2F6 antibody (STJ116186) at a dilution of 1:500.



Immunofluorescence analysis of U2OS cells using E2F6 Rabbit polyclonal antibody (STJ116186). Secondary antibody: Cy3 Goat Anti-Rabbit IgG (H+L) at 1:500 dilution. Blue: DAPI for nuclear staining.



Western blot analysis of lysates from Mouse lung using E2F6 Rabbit polyclonal antibody (STJ116186) at 1:1000 dilution. Secondary antibody:HRP Goat Anti-Rabbit IgG (H+L) (STJS000856) at 1:10000 dilution. Lysates/proteins: 25 Mu g per lane. Blocking buffer: 3% nonfat dry milk in TBST. Detection:ECL Basic Kit. Exposure time:180s.

This product is suitable for in-vitro studies under the RESEARCH USE ONLY [RUO] licence. This product must not be used as for diagnostic or other medical purposes.  
St John's Laboratory Ltd, Knowledge Dock Business Centre, University Way, London, E16 2RD | Tel: 0208 223 3081