

Anti-CCL25 antibody (24-150) (STJ116184)

STJ116184

GENERAL INFORMATION

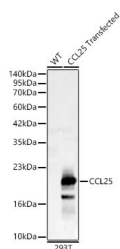
Product Type	Primary antibodies
Short Description	
Applications	WB/ELISA
Host/Source	Rabbit
Reactivity	Human

PRODUCT PROPERTIES

Clonality	Polyclonal
Clone ID	
Concentration	Lot specific
Conjugation	Unconjugated
Purification	Affinity purification
Dilution Range	WB:1:1000-1:5000 ELISA:Recommended starting concentration is 1 Mu g/mL. Please optimize the concentration based on your specific assay requirements.
Formulation	PBS with 0.02% Sodium Azide, 50% Glycerol, pH 7.3.
Isotype	IgG
Storage Instruction	Store at -20°C for up to 1 year from the date of receipt, and avoid repeat freeze-thaw cycles.

TARGET INFORMATION

Gene ID	6370
Gene Symbol	CCL25
Uniprot ID	CCL25_HUMAN
Immunogen	
Immunogen Region	24-150
Specificity	Recombinant fusion protein containing a sequence corresponding to amino acids 24-150 of human CCL25 (NP_005615.2).
Immunogen Sequence	QGVFEDCCCLAYHYPIGWAVL RRAWTYRIQEVSGSCNLPAA IFYLPKRHRKVCGNPKSREV QRAMKLLDARNKVFAKLHHN TQTFQAGPHAVKKLSSGNSK LSSSKFSNPISSSKRNVSL ISANSGL



Western blot analysis of lysates from wild type (WT) and 293T cells transfected with CCL25, using CCL25 rabbit polyclonal antibody (STJ116184) at 1:1000 dilution. Secondary antibody: HRP Goat Anti-mouse IgG (H+L) (STJS000854) at 1:10000 dilution. Lysates/proteins: 25ug per lane. Blocking buffer: 3% non-fat dry milk in TBST. Detection: ECL Basic Kit. Exposure time: 0.5s.

This product is suitable for in-vitro studies under the RESEARCH USE ONLY [RUO] licence. This product must not be used as for diagnostic or other medical purposes.
St John's Laboratory Ltd, Knowledge Dock Business Centre, University Way, London, E16 2RD | Tel: 0208 223 3081