

Anti-CAMP antibody (31-170) (STJ116153)

STJ116153

GENERAL INFORMATION

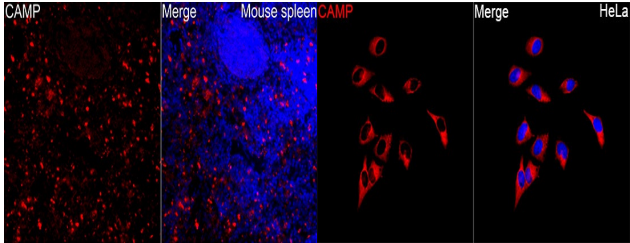
Product Type	Primary antibodies
Short Description	
Applications	WB/IHC-P/IF/ICC/ELISA
Host/Source	Rabbit
Reactivity	Human/Mouse

PRODUCT PROPERTIES

Clonality	Polyclonal
Clone ID	
Concentration	Lot specific
Conjugation	Unconjugated
Purification	Affinity purification
Dilution	WB:1:500-1:1000
Range	IHC-P:1:50-1:200 IF/ICC:1:50-1:200 ELISA:Recommended starting concentration is 1 μ g/mL. Please optimize the concentration based on your specific assay requirements.
Formulation	PBS with 0.09% Sodium Azide, 50% Glycerol, pH 7.3.
Isotype	IgG
Storage	Store at -20°C for up to 1 year from the date of receipt, and avoid repeat freeze-thaw cycles.
Instruction	

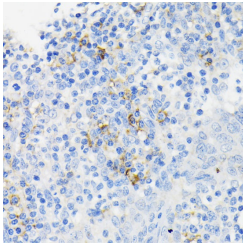
TARGET INFORMATION

Gene ID	820
Gene Symbol	CAMP
Uniprot ID	CAMP_HUMAN
Immunogen	
Immunogen Region	31-170
Specificity	Recombinant fusion protein containing a sequence corresponding to amino acids 31-170 of human CAMP (NP_004336.3).
Immunogen Sequence	IIAQVLSYKEAVLRAIDGIN QRSSDANLYRLLDLPDPTM DGDPTPKPVSTVKETVCP RTTQQSPEDCDFKKDGLVKR CMGTVTLNQARGSFDISCDK DNKRFALLGDFFRKSKEKIG KEFKRIVQRIKDFLRNLVPR

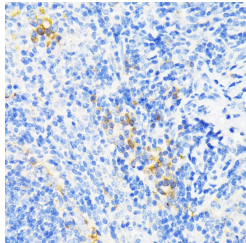


Immunofluorescence analysis of Mouse spleen tissue using CAMP Rabbit polyclonal antibody (STJ116153) at a dilution of 1:100 (40x lens). Secondary antibody: Cy3-conjugated Goat anti-Rabbit IgG (H+L) at 1:500 dilution. Blue: DAPI for nuclear staining. High pressure antigen retrieval performed with 0.01M Citrate Buffer (pH 6.0) prior to IF staining.

Immunofluorescence analysis of HeLa cells using CAMP Rabbit polyclonal antibody (STJ116153) at a dilution of 1:100 (40x lens). Secondary antibody: Cy3-conjugated Goat anti-Rabbit IgG (H+L) at 1:500 dilution. Blue: DAPI for nuclear staining.



Immunohistochemistry analysis of CAMP in paraffin-embedded human tonsil using CAMP Rabbit polyclonal antibody (STJ116153) at dilution of 1:200 (40x lens). Perform microwave antigen retrieval with 10 mM PBS buffer pH 7.2 before commencing with immunohistochemistry staining protocol.



Immunohistochemistry analysis of CAMP in paraffin-embedded mouse spleen using CAMP Rabbit polyclonal antibody (STJ116153) at dilution of 1:200 (40x lens). Perform microwave antigen retrieval with 10 mM PBS buffer pH 7.2 before commencing with immunohistochemistry staining protocol.

This product is suitable for in-vitro studies under the RESEARCH USE ONLY [RUO] licence. This product must not be used as for diagnostic or other medical purposes.

St John's Laboratory Ltd, Knowledge Dock Business Centre, University Way, London, E16 2RD | Tel: 0208 223 3081