

Anti-CYP3A4 antibody (244-503) (STJ116145)

STJ116145

GENERAL INFORMATION

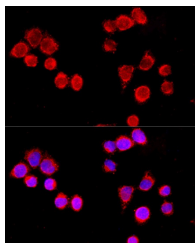
Product Type	Primary antibodies
Short Description	
Applications	WB/IF/ICC/ELISA
Host/Source	Rabbit
Reactivity	Human/Mouse/Rat

PRODUCT PROPERTIES

Clonality	Polyclonal
Clone ID	
Concentration	Lot specific
Conjugation	Unconjugated
Purification	Affinity purification
Dilution	WB:1:500-1:2000
Range	IF/ICC:1:50-1:200
	ELISA:Recommended starting concentration is 1 μ g/mL. Please optimize the concentration based on your specific assay requirements.
Formulation	PBS with 0.02% Sodium Azide, 50% Glycerol, pH 7.3.
Isotype	IgG
Storage Instruction	Store at -20°C for up to 1 year from the date of receipt, and avoid repeat freeze-thaw cycles.

TARGET INFORMATION

Gene ID	1576
Gene Symbol	CYP3A4
Uniprot ID	CP3A4_HUMAN
Immunogen	
Immunogen Region	244-503
Specificity	Recombinant fusion protein containing a sequence corresponding to amino acids 244-503 of human CYP3A4 (NP_059488.2).
Immunogen Sequence	EVTNFLRKSVKRMKESRLED TQKHRVDFLQLMDSQNSKE TESHKALSDLELVAQSIIFI FAGYETTSSVLSFIMYELAT HPDVQQKLQEEIDAVLPNKA PPTYDTVLQMEYLDMMVNET LRLFPIAMRLERVCKKDVEI NGMFIPKGVVWIMPSYALHR DPKYWTEPEKFLPERFSKKN KDNIDPYIYTPFGSGPRNCI GMRFALMNMKLALIRVLQNF SFKPCKETQIPLKLSLGGL



Immunofluorescence analysis of HeLa cells using CYP3A4 antibody (STJ116145) at dilution of 1:100 (40x lens). Blue: DAPI for nuclear staining.