

Anti-METTL2A antibody (139-378) (STJ116101)

STJ116101

GENERAL INFORMATION

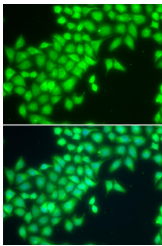
Product Type	Primary antibodies
Short Description	
Applications	IF/ICC/ELISA
Host/Source	Rabbit
Reactivity	Human/Mouse/Rat

PRODUCT PROPERTIES

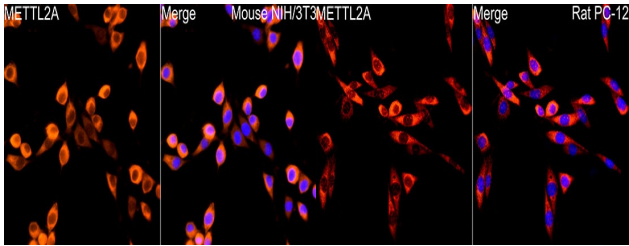
Clonality	Polyclonal
Clone ID	
Concentration	Lot specific
Conjugation	Unconjugated
Purification	Affinity purification
Dilution	IF/ICC:1:50-1:200
Range	ELISA:Recommended starting concentration is 1 μ g/mL. Please optimize the concentration based on your specific assay requirements.
Formulation	PBS with 0.02% Sodium Azide, 50% Glycerol, pH 7.3.
Isotype	IgG
Storage	Store at -20°C for up to 1 year from the date of receipt, and avoid repeat freeze-thaw cycles.
Instruction	

TARGET INFORMATION

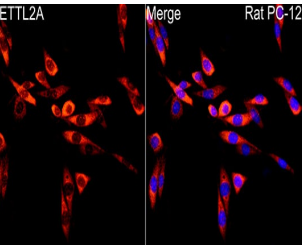
Gene ID	339175
Gene Symbol	METTL2A
Uniprot ID	MET2A_HUMAN
Immunogen	
Immunogen Region	139-378
Specificity	Recombinant fusion protein containing a sequence corresponding to amino acids 139-378 of human METTL2A (NP_859076.3).
Immunogen Sequence	EQHKCSSKSLEHKTQTLPE ENVTQKISDLEICAEFFPGS SATYRILEVGCGVGNTVFPI LQTNNDPGLFVYCCDFSSTA IELVQTNSEYDPSRCFAFVH DLCDEEKSYVPVKGSLDIII LIFVLSAIVPDKMQKAINRL SRLLKPGGMMMLRDYGRYDM AQLRFKKGQCLSGNFYVRGD GTRVYFFTQEELDTLFTTAG LEKVQNLVDRRLQVNRGKQL TMYRVWIIQCKYCKPLLSST



Immunofluorescence analysis of MCF-7 cells using METTL2A antibody (STJ116101). Blue: DAPI for nuclear staining.



Immunofluorescence analysis of NIH/3T3 cells using METTL2A rabbit polyclonal antibody (STJ116101) at dilution of 1:200 (40x lens). Blue: DAPI for nuclear staining.



Immunofluorescence analysis of PC-12 cells using METTL2A rabbit polyclonal antibody (STJ116101) at dilution of 1:200 (40x lens). Blue: DAPI for nuclear staining.

This product is suitable for in-vitro studies under the RESEARCH USE ONLY [RUO] licence. This product must not be used as for diagnostic or other medical purposes.
St John's Laboratory Ltd, Knowledge Dock Business Centre, University Way, London, E16 2RD | Tel: 0208 223 3081