

## Anti-NAPG antibody (1-312) (STJ116011)

STJ116011

### GENERAL INFORMATION

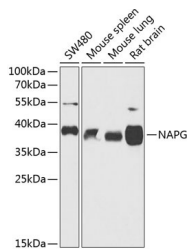
|                          |                    |
|--------------------------|--------------------|
| <b>Product Type</b>      | Primary antibodies |
| <b>Short Description</b> |                    |
| <b>Applications</b>      | WB/ELISA           |
| <b>Host/Source</b>       | Rabbit             |
| <b>Reactivity</b>        | Human/Mouse/Rat    |

### PRODUCT PROPERTIES

|                      |  |
|----------------------|--|
| <b>Clonality</b>     | Polyclonal   |
| <b>Clone ID</b>      |  |
| <b>Concentration</b> | Lot specific   |
| <b>Conjugation</b>   | Unconjugated   |
| <b>Purification</b>  | Affinity purification  |
| <b>Dilution</b>      | WB:1:500-1:2000  |
| <b>Range</b>         | ELISA:Recommended starting concentration is 1 $\mu$ g/mL. Please optimize the concentration based on your specific assay requirements. |
| <b>Formulation</b>   | PBS with 0.02% Sodium Azide, 50% Glycerol, pH 7.3.   |
| <b>Isotype</b>       | IgG  |
| <b>Storage</b>       | Store at -20°C for up to 1 year from the date of receipt, and avoid repeat freeze-thaw cycles.   |
| <b>Instruction</b>   |  |

### TARGET INFORMATION

|                           |   |
|---------------------------|---|
| <b>Gene ID</b>            | 8774  |
| <b>Gene Symbol</b>        | NAPG  |
| <b>Uniprot ID</b>         | SNAG_HUMAN  |
| <b>Immunogen</b>          |   |
| <b>Immunogen Region</b>   | 1-312   |
| <b>Specificity</b>        | Recombinant fusion protein containing a sequence corresponding to amino acids 1-312 of human NAPG (NP_003817.1).  |
| <b>Immunogen Sequence</b> | MAAQKINEGLEHLAKAEKYL KTGFLKWKPDYDSAASEYGK AAVAFKNAKQFEQAKDACLR EAVAHENNRALFHAAKAYEQ AGMMLKEMQKLPEAVQLIEK ASMMYLENGTPDTAAMALER AGKLIENVDPKAVQLYQQT ANVFENEERLRQAVELLGKA SRLLVGRGRFDEAALSQKE KNIYKEIENYPTCYKKTIAQ VLVHLHRNDYVAAERCVRRES YSIPGFNGSEDCAALEQLL |



Western blot analysis of extracts of various cell lines, using NAPG antibody (STJ116011) at 1:1000 dilution. Secondary antibody: HRP Goat Anti-Rabbit IgG (H+L) (STJS000856) at 1:10000 dilution. Lysates/proteins: 25  $\mu$ g per lane. Blocking buffer: 3% nonfat dry milk in TBST. Detection: ECL Basic Kit. Exposure time: 30s.

This product is suitable for in-vitro studies under the RESEARCH USE ONLY [RUO] licence. This product must not be used as for diagnostic or other medical purposes.  
St John's Laboratory Ltd, Knowledge Dock Business Centre, University Way, London, E16 2RD | Tel: 0208 223 3081