

Anti-FGF23 antibody (91-190) (STJ116008)

STJ116008

GENERAL INFORMATION

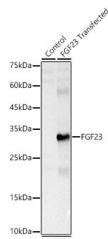
Product Type	Primary antibodies
Short Description	
Applications	WB/ELISA
Host/Source	Rabbit
Reactivity	Human/Rat

PRODUCT PROPERTIES

Clonality	Polyclonal
Clone ID	
Concentration	Lot specific
Conjugation	Unconjugated
Purification	Affinity purification
Dilution Range	WB:1:500-1:1000 ELISA:Recommended starting concentration is 1 Mu g/mL. Please optimize the concentration based on your specific assay requirements.
Formulation	PBS with 0.02% Sodium Azide, 50% Glycerol, pH 7.3.
Isotype	IgG
Storage	Store at -20°C for up to 1 year from the date of receipt, and avoid repeat freeze-thaw cycles.
Instruction	

TARGET INFORMATION

Gene ID	8074
Gene Symbol	FGF23
Uniprot ID	FGF23_HUMAN
Immunogen	
Immunogen Region	91-190
Specificity	A synthetic peptide corresponding to a sequence within amino acids 91-190 of human FGF23 (NP_065689.1).
Immunogen Sequence	RRYLQMDFRGNIFGSHYFDP ENCRFQHQTLNGYDVYHSP QYHFLVSLGRAKRAFLPGMN PPPYSQFLSRNEIPLIHFN TPIPRRHTRSAEDDSERDPL



Western blot analysis of lysates from wild type (WT) and 293T cells transfected with FGF23 using FGF23 Rabbit polyclonal antibody (STJ116008) at 1:600 dilution. Secondary antibody:HRP Goat Anti-Rabbit IgG (H+L) (STJS000856) at 1:10000 dilution. Lysates/proteins: 20A Mu g per lane. Blocking buffer: 3% nonfat dry milk in TBST. Detection:ECL Basic Kit. Exposure time: 1s.

This product is suitable for in-vitro studies under the RESEARCH USE ONLY [RUO] licence. This product must not be used as for diagnostic or other medical purposes.
St John's Laboratory Ltd, Knowledge Dock Business Centre, University Way, London, E16 2RD | Tel: 0208 223 3081