

Anti-PMS1 antibody (405-619) (STJ115981)
STJ115981

GENERAL INFORMATION

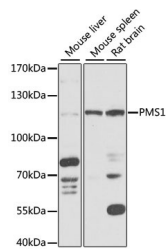
Product Type	Primary antibodies
Short Description	
Applications	WB/ELISA
Host/Source	Rabbit
Reactivity	Mouse/Rat

PRODUCT PROPERTIES

Clonality	Polyclonal
Clone ID	
Concentration	Lot specific
Conjugation	Unconjugated
Purification	Affinity purification
Dilution	WB:1:500-1:2000
Range	ELISA:Recommended starting concentration is 1 Mu g/mL. Please optimize the concentration based on your specific assay requirements.
Formulation	PBS with 0.02% Sodium Azide, 50% Glycerol, pH 7.3.
Isotype	IgG
Storage	Store at -20°C for up to 1 year from the date of receipt, and avoid repeat freeze-thaw cycles.
Instruction	

TARGET INFORMATION

Gene ID	5378
Gene Symbol	PMS1
Uniprot ID	PMS1_HUMAN
Immunogen	
Immunogen Region	405-619
Specificity	Recombinant fusion protein containing a sequence corresponding to amino acids 405-619 of human PMS1 (NP_000525.1). DCLNHQISIGDFGYGHCSE ISNIDKNTKNAFQDISMSNV SWENSQTEYSKTCFISSVKH TQSENGNKDHIDESGENEEE
Immunogen Sequence	AGLENSSEISADEWSRGNIL KNSVGENIEPVKILVPEKSL PCKVSNNNYPIPEQMNLNED SCNKKSNNVIDNKSgKVTAYD LLSNRVIKKPMSASALFVQD HRPQFLIENPKTSLEDATLQ IEELWKTLSEEEKLK



Western blot analysis of extracts of various cell lines, using PMS1 antibody (STJ115981) at 1:1000 dilution. Secondary antibody: HRP Goat Anti-Rabbit IgG (H+L) (STJS000856) at 1:10000 dilution. Lysates/proteins: 25 Mu g per lane. Blocking buffer: 3% nonfat dry milk in TBST. Detection: ECL Basic Kit. Exposure time: 5s.

This product is suitable for in-vitro studies under the RESEARCH USE ONLY [RUO] licence. This product must not be used as for diagnostic or other medical purposes.
St John's Laboratory Ltd, Knowledge Dock Business Centre, University Way, London, E16 2RD | Tel: 0208 223 3081