

Anti-ESRRB antibody (300-400) (STJ115912)

STJ115912

GENERAL INFORMATION

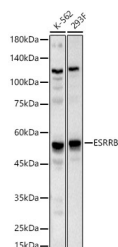
Product Type	Primary antibodies
Short Description	
Applications	WB/ELISA
Host/Source	Rabbit
Reactivity	Human/Mouse/Rat

PRODUCT PROPERTIES

Clonality	Polyclonal
Clone ID	
Concentration	Lot specific
Conjugation	Unconjugated
Purification	Affinity purification
Dilution Range	WB:1:500-1:1000 ELISA:Recommended starting concentration is 1 Mu g/mL. Please optimize the concentration based on your specific assay requirements.
Formulation	PBS with 0.05% Proclin300, 50% Glycerol, pH 7.3.
Isotype	IgG
Storage Instruction	Store at -20°C for up to 1 year from the date of receipt, and avoid repeat freeze-thaw cycles.

TARGET INFORMATION

Gene ID	2103
Gene Symbol	ESRRB
Uniprot ID	ERR2_HUMAN
Immunogen	
Immunogen Region	300-400
Specificity	A synthetic peptide corresponding to a sequence within amino acids 300-400 of human ESRRB (NP_004443.3).
Immunogen Sequence	VYAEDYIMDEEHSRLAGLLE LYRAILQLVRRYKCLKVEKE EFVTLKALALANSDSMYIED LEAVQKLQDLLHEALQDYEL SQRHEEPWRTGKLLLTPLLR



Western blot analysis of various lysates, using ESRRB antibody (STJ115912) at 1:1000 dilution. Secondary antibody: HRP Goat Anti-Rabbit IgG (H+L) (STJS000856) at 1:10000 dilution. Lysates/proteins: 25 Mu g per lane. Blocking buffer: 3% nonfat dry milk in TBST. Detection: ECL Basic Kit. Exposure time: 1s.

This product is suitable for in-vitro studies under the RESEARCH USE ONLY [RUO] licence. This product must not be used as for diagnostic or other medical purposes.
St John's Laboratory Ltd, Knowledge Dock Business Centre, University Way, London, E16 2RD | Tel: 0208 223 3081