

Anti-RHOA antibody (94-193) (STJ115882)

STJ115882

GENERAL INFORMATION

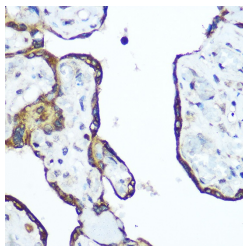
Product Type	Primary antibodies
Short Description	
Applications	WB/IHC-P/ELISA
Host/Source	Rabbit
Reactivity	Human/Mouse/Rat

PRODUCT PROPERTIES

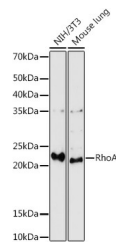
Clonality	Polyclonal
Clone ID	
Concentration	Lot specific
Conjugation	Unconjugated
Purification	Affinity purification
Dilution Range	WB:1:500-1:1000 IHC-P:1:50-1:200 ELISA:Recommended starting concentration is 1 Mu g/mL. Please optimize the concentration based on your specific assay requirements.
Formulation	PBS with 0.02% Sodium Azide, 50% Glycerol, pH 7.3.
Isotype	IgG
Storage	Store at -20°C for up to 1 year from the date of receipt, and avoid repeat freeze-thaw cycles.
Instruction	

TARGET INFORMATION

Gene ID	387
Gene Symbol	RHOA
Uniprot ID	RHOA_HUMAN
Immunogen	
Immunogen Region	94-193
Specificity	A synthetic peptide corresponding to a sequence within amino acids 94-193 of human RhoA (NP_001655.1).
Immunogen Sequence	NIPEKWTPEVKHFQPNVPIL LVGNKKDLRNDHTRRELAK MKQEPVKPEEGRDMANRIGA FG YMECSAKTKDGVREVFEM ATRALQARRGKKKSGCLVL



Immunohistochemistry analysis of RhoA in paraffin-embedded human placenta using RhoA Rabbit polyclonal antibody (STJ115882) at dilution of 1:100 (40x lens). Perform microwave antigen retrieval with 10 mM Tris/EDTA buffer pH 9.0 before commencing with immunohistochemistry staining protocol.



Western blot analysis of various lysates using RhoA Rabbit polyclonal antibody (STJ115882) at 1:1000 dilution. Secondary antibody: HRP Goat Anti-Rabbit IgG (H+L) (STJS000856) at 1:10000 dilution. Lysates/proteins: 25 Mu g per lane. Blocking buffer: 3% nonfat dry milk in TBST. Detection: ECL Enhanced Kit. Exposure time: 180s.

This product is suitable for in-vitro studies under the RESEARCH USE ONLY [RUO] licence. This product must not be used as for diagnostic or other medical purposes.
St John's Laboratory Ltd, Knowledge Dock Business Centre, University Way, London, E16 2RD | Tel: 0208 223 3081