

Anti-SIN3A antibody (1-120) (STJ115863)

STJ115863

GENERAL INFORMATION

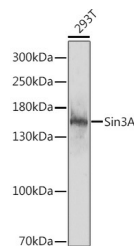
Product Type	Primary antibodies
Short Description	
Applications	WB/ELISA
Host/Source	Rabbit
Reactivity	Human/Rat

PRODUCT PROPERTIES

Clonality	Polyclonal
Clone ID	
Concentration	Lot specific
Conjugation	Unconjugated
Purification	Affinity purification
Dilution Range	WB:1:500-1:2000 ELISA:Recommended starting concentration is 1 Mu g/mL. Please optimize the concentration based on your specific assay requirements.
Formulation	PBS with 0.02% Sodium Azide, 50% Glycerol, pH 7.3.
Isotype	IgG
Storage	Store at -20°C for up to 1 year from the date of receipt, and avoid repeat freeze-thaw cycles.
Instruction	

TARGET INFORMATION

Gene ID	25942
Gene Symbol	SIN3A
Uniprot ID	SIN3A_HUMAN
Immunogen	
Immunogen Region	1-120
Specificity	Recombinant fusion protein containing a sequence corresponding to amino acids 1-120 of human Sin3A (NP_056292.1). MKRRLDDQESPVYAAQQRRI PGSTFAFPHQHRVLAPAPPV YEAVSETMQSATGIQYSVTP SYQVSAMPQSSGSHGPAIAA
Immunogen Sequence	VHSSHHHTAVQPHGGQVVQ SHAHPAPPVAPVQGGQQFQR



Western blot analysis of extracts of 293T cells, using Sin3A antibody (STJ115863) at 1:1000 dilution. Secondary antibody: HRP Goat Anti-Rabbit IgG (H+L) (STJ5000856) at 1:10000 dilution. Lysates/proteins: 25 Mu g per lane. Blocking buffer: 3% nonfat dry milk in TBST. Detection: ECL Enhanced Kit. Exposure time: 90s.

This product is suitable for in-vitro studies under the RESEARCH USE ONLY [RUO] licence. This product must not be used as for diagnostic or other medical purposes.
St John's Laboratory Ltd, Knowledge Dock Business Centre, University Way, London, E16 2RD | Tel: 0208 223 3081