

Anti-CPT1C antibody (270-400) (STJ115788)

STJ115788

GENERAL INFORMATION

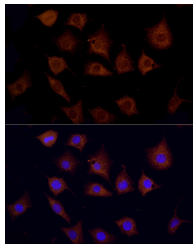
Product Type	Primary antibodies
Short Description	
Applications	WB/IF/ICC/ELISA
Host/Source	Rabbit
Reactivity	Human/Mouse/Rat

PRODUCT PROPERTIES

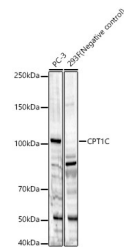
Clonality	Polyclonal
Clone ID	
Concentration	Lot specific
Conjugation	Unconjugated
Purification	Affinity purification
Dilution Range	WB:1:2000-1:8000 IF/ICC:1:50-1:200 ELISA:Recommended starting concentration is 1 µg/mL. Please optimize the concentration based on your specific assay requirements.
Formulation	PBS with 0.05% Proclin300, 50% Glycerol, pH 7.3.
Isotype	IgG
Storage Instruction	Store at -20°C for up to 1 year from the date of receipt, and avoid repeat freeze-thaw cycles.

TARGET INFORMATION

Gene ID	126129
Gene Symbol	CPT1C
Uniprot ID	CPT1C_HUMAN
Immunogen	
Immunogen Region	270-400
Specificity	Recombinant fusion protein containing a sequence corresponding to amino acids 270-400 of human CPT1C (NP_001129524.1).
Immunogen Sequence	LYRHLNRQEIPTLLMGMR PLCSAQYEKIFNTTRIPGVQ KDYIRHLHDSQHVAVFHRGR FFRMGTHSRNSLLSPRALEQ QFQRILDDPSPACPHEEHLA ALTAAPRGTTAQVRTSLKTQ AAEALEAVEGA



Immunofluorescence analysis of L929 using CPT1C antibody (STJ115788) at dilution of 1:100. Blue: DAPI for nuclear staining.



Western blot analysis of various lysates, using CPT1C Rabbit polyclonal antibody (STJ115788) at 1:7000 dilution. Secondary antibody: HRP Goat Anti-Rabbit IgG (H+L) (STJS000856) at 1:10000 dilution. Lysates/proteins: 25 µg per lane. Blocking buffer: 3% nonfat dry milk in TBST. Detection: ECL Basic Kit. Exposure time: 180s.

This product is suitable for in-vitro studies under the RESEARCH USE ONLY [RUO] licence. This product must not be used as for diagnostic or other medical purposes.
St John's Laboratory Ltd, Knowledge Dock Business Centre, University Way, London, E16 2RD | Tel: 0208 223 3081