

Anti-SLC25A27 antibody (258-275) (STJ115776)

STJ115776

GENERAL INFORMATION

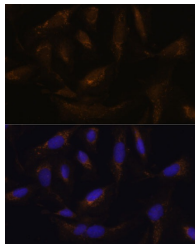
Product Type	Primary antibodies
Short Description	
Applications	WB/IF/ICC/ELISA
Host/Source	Rabbit
Reactivity	Human/Mouse/Rat

PRODUCT PROPERTIES

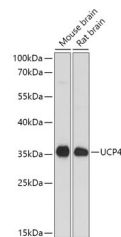
Clonality	Polyclonal
Clone ID	
Concentration	Lot specific
Conjugation	Unconjugated
Purification	Affinity purification
Dilution Range	WB:1:500-1:2000 IF/ICC:1:50-1:200 ELISA:Recommended starting concentration is 1 Mu g/mL. Please optimize the concentration based on your specific assay requirements.
Formulation	PBS with 0.01% Thimerosal, 50% Glycerol, pH 7.3.
Isotype	IgG
Storage Instruction	Store at -20°C for up to 1 year from the date of receipt, and avoid repeat freeze-thaw cycles.

TARGET INFORMATION

Gene ID	9481
Gene Symbol	SLC25A27
Uniprot ID	UCP4_HUMAN
Immunogen	
Immunogen Region	258-275
Specificity	A synthetic peptide corresponding to a sequence within amino acids 201-300 of human SLC25A27 (NP_004268.3).
Immunogen Sequence	ALVNMGDLTTYDTVKHYLVLP NTPLEDNIMTHGLSSLCSSL VASILGTPADVIKSRIMNQP RDKQGRGLLYKSSTDCLIQAVQGEGFMSLYKGFLPSWLRM TPWSMVFWLTYEKIREMSGV SPF



Immunofluorescence analysis of U-2 OS cells using SLC25A27 Rabbit polyclonal antibody (STJ115776) at dilution of 1:100. Secondary antibody: Cy3 Goat Anti-Rabbit IgG (H+L) at 1:500 dilution. Blue: DAPI for nuclear staining.



Western blot analysis of various lysates using SLC25A27 Rabbit polyclonal antibody (STJ115776) at 1:1000 dilution. Secondary antibody: HRP Goat Anti-Rabbit IgG (H+L) (STJS000856) at 1:10000 dilution. Lysates/proteins: 25 Mu g per lane. Blocking buffer: 3% nonfat dry milk in TBST. Detection: ECL Basic Kit. Exposure time: 90s.

This product is suitable for in-vitro studies under the RESEARCH USE ONLY [RUO] licence. This product must not be used as for diagnostic or other medical purposes.
St John's Laboratory Ltd, Knowledge Dock Business Centre, University Way, London, E16 2RD | Tel: 0208 223 3081