

Anti-SULF1 antibody (480-610) (STJ115741)

STJ115741

GENERAL INFORMATION

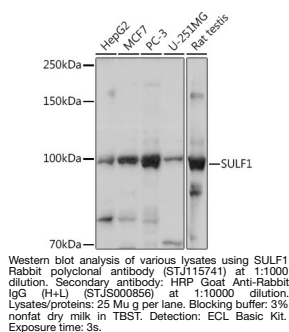
Product Type	Primary antibodies
Short Description	
Applications	WB/ELISA
Host/Source	Rabbit
Reactivity	Human/Rat

PRODUCT PROPERTIES

Clonality	Polyclonal
Clone ID	
Concentration	Lot specific
Conjugation	Unconjugated
Purification	Affinity purification
Dilution Range	WB:1:500-1:2000
	ELISA: Recommended starting concentration is 1 µg/mL. Please optimize the concentration based on your specific assay requirements.
Formulation	PBS with 0.01% Thimerosal, 50% Glycerol, pH 7.3.
Isotype	IgG
Storage	Store at -20°C for up to 1 year from the date of receipt, and avoid repeat freeze-thaw cycles.
Instruction	

TARGET INFORMATION

Gene ID	23213
Gene Symbol	SULF1
Uniprot ID	SULF1_HUMAN
Immunogen	
Immunogen Region	480-610
Specificity	Recombinant fusion protein containing a sequence corresponding to amino acids 480-610 of human SULF1 (NP_001121676.1).
Immunogen Sequence	SDLLTVRQSTRNLYARGFHD KDEKSCRESGYRASRSQK SQRQFLRNQGT PKYKPRFVH TRQTRSLSVFEGEIDINL EEEELQVLQPRNIAKRHDE GHKGPRLDQASSGGNRRML ADSSNAVGPPPT



This product is suitable for in-vitro studies under the RESEARCH USE ONLY [RUO] licence. This product must not be used as for diagnostic or other medical purposes.
St John's Laboratory Ltd, Knowledge Dock Business Centre, University Way, London, E16 2RD | Tel: 0208 223 3081