

Anti-GATA4 antibody (350-442) (STJ115704)

STJ115704

GENERAL INFORMATION

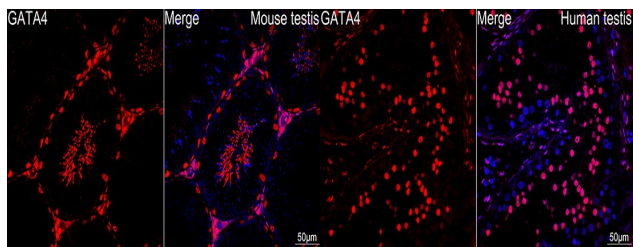
Product Type	Primary antibodies
Short Description	
Applications	WB/IHC-P/IF/ICC/ELISA
Host/Source	Rabbit
Reactivity	Human/Mouse/Rat

PRODUCT PROPERTIES

Clonality	Polyclonal
Clone ID	
Concentration	Lot specific
Conjugation	Unconjugated
Purification	Affinity purification
Dilution Range	WB:1:500-1:1000 IHC-P:1:50-1:200 IF/ICC:1:50-1:200 ELISA:Recommended starting concentration is 1 Mu g/mL. Please optimize the concentration based on your specific assay requirements.
Formulation	PBS with 0.05% Proclin300, 50% Glycerol, pH 7.3.
Isotype	IgG
Storage	Store at -20°C for up to 1 year from the date of receipt, and avoid repeat freeze-thaw cycles.
Instruction	

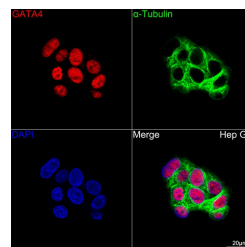
TARGET INFORMATION

Gene ID	2626
Gene Symbol	GATA4
Uniprot ID	GATA4_HUMAN
Immunogen	
Immunogen Region	350-442
Specificity	A synthetic peptide corresponding to a sequence within amino acids 341-440 of human GATA4 (NP_002043.2).
Immunogen Sequence	PPASGASSNSSNATTSSEE MRPIKTEPGLSSHYGHSSSV SQTFSVSAMSGHGPSIHPVL SALKLSPQGYASPVSPQSPQT SSKQDSWNSLVLADSHGDII

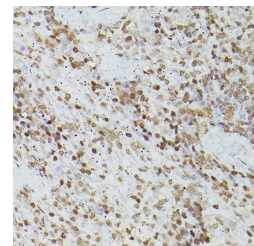


Confocal imaging of a paraffin-embedded Mouse testis tissue using a GATA4 Rabbit polyclonal antibody (STJ115704, dilution 1:200) followed by a further incubation with Cy3 Goat Anti-Rabbit IgG (H+L) (dilution 1:500) (Red). DAPI was used for nuclear staining (Blue). Objective: 40x. Perform high pressure antigen retrieval with 0.01 M citrate buffer (pH 6.0) prior to IF staining.

Confocal imaging of a paraffin-embedded Human testis tissue using a GATA4 Rabbit polyclonal antibody (STJ115704, dilution 1:200) followed by a further incubation with Cy3 Goat Anti-Rabbit IgG (H+L) (dilution 1:500) (Red). DAPI was used for nuclear staining (Blue). Objective: 40x. Perform high pressure antigen retrieval with 0.01 M citrate buffer (pH 6.0) prior to IF staining.



Confocal imaging of Hep G2 cells using a GATA4 Rabbit polyclonal antibody (STJ115704, dilution 1:200) followed by a further incubation with Cy3 Goat Anti-Rabbit IgG (H+L) (dilution 1:500) (Red). The cells were counterstained with Alpha-Tubulin Mouse monoclonal antibody (dilution 1:400) followed by incubation with AB104488-conjugated Goat Anti-Mouse IgG (H+L) antibody (dilution 1:500) (Green). DAPI was used for nuclear staining (Blue). Objective: 100x.



Immunohistochemistry analysis of GATA4 in paraffin-embedded rat spleen using GATA4 Rabbit polyclonal antibody (STJ115704) at dilution of 1:100 (40x lens). Perform high pressure antigen retrieval with 10 mM citrate buffer pH 6.0 before commencing with immunohistochemistry staining protocol.

This product is suitable for in-vitro studies under the RESEARCH USE ONLY [RUO] licence. This product must not be used as for diagnostic or other medical purposes.

St John's Laboratory Ltd, Knowledge Dock Business Centre, University Way, London, E16 2RD | Tel: 0208 223 3081