

Anti-DAPP1 antibody (100-273) (STJ115670)

STJ115670

GENERAL INFORMATION

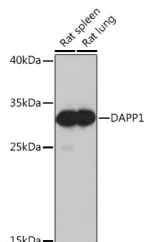
Product Type	Primary antibodies
Short Description	
Applications	WB/IF/ICC/ELISA
Host/Source	Rabbit
Reactivity	Human/Mouse/Rat

PRODUCT PROPERTIES

Clonality	Polyclonal
Clone ID	
Concentration	Lot specific
Conjugation	Unconjugated
Purification	Affinity purification
Dilution	WB:1:500-1:2000
Range	IF/CC:1:50-1:200
	ELISA:Recommended starting concentration is 1 μ g/mL. Please optimize the concentration based on your specific assay requirements.
Formulation	PBS with 0.01% Thimerosal, 50% Glycerol, pH 7.3.
Isotype	IgG
Storage Instruction	Store at -20°C for up to 1 year from the date of receipt, and avoid repeat freeze-thaw cycles.

TARGET INFORMATION

Gene ID	27071
Gene Symbol	DAPP1
Uniprot ID	DAPP1_HUMAN
Immunogen	
Immunogen Region	100-273
Specificity	A synthetic peptide corresponding to a sequence within amino acids 100-273 of human DAPP1 (NP_055210.2).
Immunogen Sequence	SSLKDFVKHFANQLIGSET GTLMVLKHPYPRKVEPSIY ESVRVHTAMQTGRTEDDLVP TAPSLGTKEGYLTQGGGLVK TWKTRWFTLHRNELKYFKDQ MSPEPIRILDLTECSAVQFD YSQERVNCFCLVFPFRTFYL CAKTGVEADEWIKLRWKLS QIRKQLNQEGGTIR



Western blot analysis of various lysates using DAPP1 Rabbit polyclonal antibody (STJ115670) at 1:1000 dilution. Secondary antibody: HRP Goat Anti-Rabbit IgG (H+L) (STJS000896) at 1:10000 dilution. Lysates/proteins: 25 μ g per lane. Blocking buffer: 3% nonfat dry milk in TBST. Detection: ECL Basic Kit. Exposure time: 10s.

This product is suitable for in-vitro studies under the RESEARCH USE ONLY [RUO] licence. This product must not be used as for diagnostic or other medical purposes.

St John's Laboratory Ltd, Knowledge Dock Business Centre, University Way, London, E16 2RD | Tel: 0208 223 3081