

Anti-RND1 antibody (187-206) (STJ115660)

STJ115660

GENERAL INFORMATION

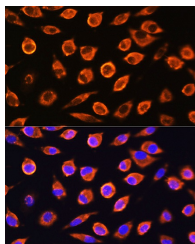
Product Type	Primary antibodies
Short Description	
Applications	WB/IF/CC/ELISA
Host/Source	Rabbit
Reactivity	Mouse/Rat

PRODUCT PROPERTIES

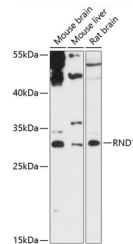
Clonality	Polyclonal
Clone ID	
Concentration	Lot specific
Conjugation	Unconjugated
Purification	Affinity purification
Dilution Range	WB:1:500-1:2000 IF/CC:1:50-1:200 ELISA:Recommended starting concentration is 1 µg/mL. Please optimize the concentration based on your specific assay requirements.
Formulation	PBS with 0.01% Thimerosal, 50% Glycerol, pH 7.3.
Isotype	IgG
Storage Instruction	Store at -20°C for up to 1 year from the date of receipt, and avoid repeat freeze-thaw cycles.

TARGET INFORMATION

Gene ID	27289
Gene Symbol	RND1
Uniprot ID	RND1_HUMAN
Immunogen	
Immunogen Region	187-206
Specificity	A synthetic peptide corresponding to a sequence within amino acids 133-232 of human RND1 (NP_055285.1). LSTLMELSHQKQAPISEYEQG CAIAKQLGAEIYLEGSAFTS EKSIHSIFRTASMLCLNKPS PLPQKSPVRSLSKRLLHLPS
Immunogen Sequence	RSELISSTFKKEKAKSCSIM



Immunofluorescence analysis of L929 cells using RND1 Rabbit polyclonal antibody (STJ115660) at dilution of 1:100. Secondary antibody: Cy3 Goat Anti-Rabbit IgG (H+L) at 1:500 dilution. Blue: DAPI for nuclear staining.



Western blot analysis of various lysates using RND1 Rabbit polyclonal antibody (STJ115660) at 1:3000 dilution.

This product is suitable for in-vitro studies under the RESEARCH USE ONLY [RUO] licence. This product must not be used as for diagnostic or other medical purposes.
St John's Laboratory Ltd, Knowledge Dock Business Centre, University Way, London, E16 2RD | Tel: 0208 223 3081