

Anti-GCSH antibody (1-173) (STJ115650)
STJ115650

GENERAL INFORMATION

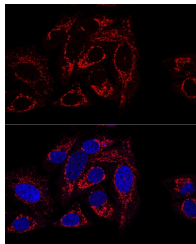
Product Type	Primary antibodies
Short Description	
Applications	WB/IF/ICC/ELISA
Host/Source	Rabbit
Reactivity	Human/Mouse/Rat

PRODUCT PROPERTIES

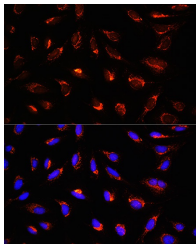
Clonality	Polyclonal
Clone ID	
Concentration	Lot specific
Conjugation	Unconjugated
Purification	Affinity purification
Dilution	WB:1:500-1:1000
Range	IF/CC:1:50-1:200
	ELISA:Recommended starting concentration is 1 Mu g/mL. Please optimize the concentration based on your specific assay requirements.
Formulation	PBS with 0.05% Proclin300, 50% Glycerol, pH 7.3.
Isotype	IgG
Storage Instruction	Store at -20°C for up to 1 year from the date of receipt, and avoid repeat freeze-thaw cycles.

TARGET INFORMATION

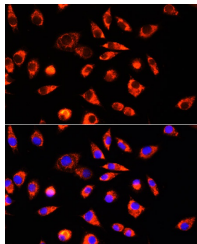
Gene ID	2653
Gene Symbol	GCSH
Uniprot ID	GCSH_HUMAN
Immunogen	
Immunogen Region	1-173
Specificity	Recombinant fusion protein containing a sequence corresponding to amino acids 1-173 of human GCSH (NP_004474.2).
Immunogen Sequence	MALRVVRSVRALLCTLRVAP SPAAPCPPRPWQLGVGAVRT LRTGPALLSVRKFTKEHEWV TTENGIGTVGISNFAQEALG DVVYCSLPEVGTCLNKQDEF GALESVKAASELYSPLSGEV TEINEALAENPGLVNBKSCYE DGWLIKMTLSNPSELDELMS EEAYEKYIKSIEE



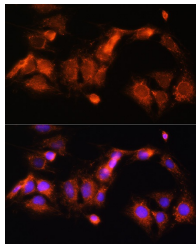
Confocal immunofluorescence analysis of U2OS cells using GCSH antibody (STJ115650) at dilution of 1:100 (60x lens). Blue: DAPI for nuclear staining.



Immunofluorescence analysis of U-2 OS cells using GCSH Rabbit polyclonal antibody (STJ115650) at dilution of 1:100 (40x lens). Blue: DAPI for nuclear staining.



Immunofluorescence analysis of L929 cells using GCSH Rabbit polyclonal antibody (STJ115650) at dilution of 1:100 (40x lens). Blue: DAPI for nuclear staining.



Immunofluorescence analysis of C6 cells using GCSH Rabbit polyclonal antibody (STJ115650) at dilution of 1:100 (40x lens). Blue: DAPI for nuclear staining.

This product is suitable for in-vitro studies under the RESEARCH USE ONLY [RUO] licence. This product must not be used as for diagnostic or other medical purposes.
St John's Laboratory Ltd, Knowledge Dock Business Centre, University Way, London, E16 2RD | Tel: 0208 223 3081