

Anti-HSPB1 antibody (1-100) (STJ115636)

STJ115636

GENERAL INFORMATION

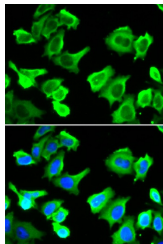
Product Type	Primary antibodies
Short Description	
Applications	WB/IF/ICC/ELISA
Host/Source	Rabbit
Reactivity	Human

PRODUCT PROPERTIES

Clonality	Polyclonal
Clone ID	
Concentration	Lot specific
Conjugation	Unconjugated
Purification	Affinity purification
Dilution Range	WB:1:500-1:2000 IF/ICC:1:50-1:200 ELISA:Recommended starting concentration is 1 µg/mL. Please optimize the concentration based on your specific assay requirements.
Formulation	PBS with 0.02% Sodium Azide, 50% Glycerol, pH 7.3.
Isotype	IgG
Storage	Store at -20°C for up to 1 year from the date of receipt, and avoid repeat freeze-thaw cycles.
Instruction	

TARGET INFORMATION

Gene ID	3315
Gene Symbol	HSPB1
Uniprot ID	HSPB1_HUMAN
Immunogen	
Immunogen Region	1-100
Specificity	Recombinant fusion protein containing a sequence corresponding to amino acids 1-100 of human HSP27/HSP27/HSPB1 (NP_001531.1).
Immunogen Sequence	MTERRVPFSLLRGPSWDPPR DWYPHSRLFDQAFGLPRLPE EWSQWLGGSSWPGYVRPLPP AAIESPAVAAPAYSRLSRQ LSSGVSEIRHTADRWVSLD



Immunofluorescence analysis of A549 cells using HSP27/HSP27/HSPB1 antibody (STJ115636). Blue: DAPI for nuclear staining.