

Anti-IRF8 antibody (137-426) (STJ115632)

STJ115632

GENERAL INFORMATION

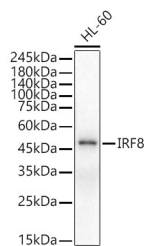
Product Type	Primary antibodies
Short Description	
Applications	WB/ELISA
Host/Source	Rabbit
Reactivity	Human

PRODUCT PROPERTIES

Clonality	Polyclonal
Clone ID	
Concentration	Lot specific
Conjugation	Unconjugated
Purification	Affinity purification
Dilution	WB:1:100-1:500
Range	ELISA:Recommended starting concentration is 1 µg/mL. Please optimize the concentration based on your specific assay requirements.
Formulation	PBS with 0.02% Sodium Azide, 50% Glycerol, pH 7.3.
Isotype	IgG
Storage	Store at -20°C for up to 1 year from the date of receipt, and avoid repeat freeze-thaw cycles.
Instruction	

TARGET INFORMATION

Gene ID	3394
Gene Symbol	IRF8
Uniprot ID	IRF8_HUMAN
Immunogen	
Immunogen Region	137-426
Specificity	Recombinant fusion protein containing a sequence corresponding to amino acids 137-426 of human IRF8 (NP_002154.1).
Immunogen Sequence	ECGRSEIDELIKEPSVDDYM GMIKRSPSPPEACRSQLLPD WWAQQPSTGVPLVTGYTTYD AHHSAFSQMVISFYGGKLV GQATTTCPGECRLSLSQPL PGTKLYGPEGLELVRFPAD AIPSERQRQVTRKLFGHLER GVLLHSSRQGVFVKRLCQGR VFCSGNAVVCGRPNKLERD EVVQVFDTSQFFRELQQFYN SQGRLPDGRVLCFGEEFPD MAPLRSKLILVQIEQLYVR



Western blot analysis of lysates from HL-60 cells, using IRF8 Rabbit polyclonal antibody (STJ115632) at 1:400 dilution. Secondary antibody: HRP Goat Anti-Rabbit IgG (H+L) (STJS000856) at 1:10000 dilution. Lysates/proteins: 25 µg per lane. Blocking buffer: 3% nonfat dry milk in TBST. Detection: ECL Basic Kit. Exposure time: 60s.

This product is suitable for in-vitro studies under the RESEARCH USE ONLY [RUO] licence. This product must not be used as for diagnostic or other medical purposes.
St John's Laboratory Ltd, Knowledge Dock Business Centre, University Way, London, E16 2RD | Tel: 0208 223 3081