

Anti-UBE2L6 antibody (100-153) (STJ115626)

STJ115626

GENERAL INFORMATION

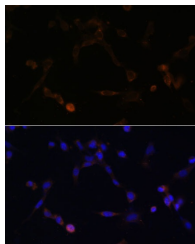
Product Type	Primary antibodies
Short Description	
Applications	WB/IF/ICC/ELISA
Host/Source	Rabbit
Reactivity	Human/Mouse/Rat

PRODUCT PROPERTIES

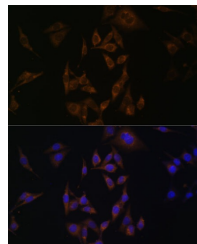
Clonality	Polyclonal
Clone ID	
Concentration	Lot specific
Conjugation	Unconjugated
Purification	Affinity purification
Dilution Range	WB:1:500-1:1000 IF/ICC:1:50-1:200 ELISA:Recommended starting concentration is 1 Mu g/mL. Please optimize the concentration based on your specific assay requirements.
Formulation	PBS with 0.05% Proclin300, 50% Glycerol, pH 7.3.
Isotype	IgG
Storage Instruction	Store at -20°C for up to 1 year from the date of receipt, and avoid repeat freeze-thaw cycles.

TARGET INFORMATION

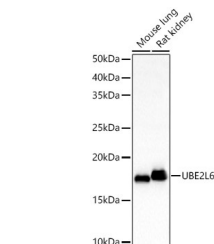
Gene ID	9246
Gene Symbol	UBE2L6
Uniprot ID	UB2L6_HUMAN
Immunogen	
Immunogen Region	100-153
Specificity	A synthetic peptide corresponding to a sequence within amino acids 100-153 of human UBE2L6 (NP_004214.1).
Immunogen Sequence	KTCQVLEALNVLVNRPNIREFLRMDLADLLTQNPELFRKN AEEFTLRFGVDRPS



Immunofluorescence analysis of NIH/3T3 cells using UBE2L6 antibody (STJ115626) at dilution of 1:100. Blue: DAPI for nuclear staining.



Immunofluorescence analysis of HeLa cells using UBE2L6 antibody (STJ115626) at dilution of 1:100. Blue: DAPI for nuclear staining.



Western blot analysis of various lysates, using UBE2L6 antibody (STJ115626) at 1:500 dilution. Secondary antibody: HRP-Goat Anti-Rabbit IgG (H+L) (STJS000856) at 1:10000 dilution. Lysates/proteins: 25 Mu g per lane. Blocking buffer: 3% nonfat dry milk in TBST. Detection: ECL Basic Kit. Exposure time: 30s.

This product is suitable for in-vitro studies under the RESEARCH USE ONLY [RUO] licence. This product must not be used as for diagnostic or other medical purposes.
St John's Laboratory Ltd, Knowledge Dock Business Centre, University Way, London, E16 2RD | Tel: 0208 223 3081