

Anti-CRY1 antibody (496-586) (STJ115622)

STJ115622

GENERAL INFORMATION

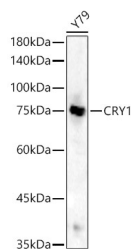
Product Type	Primary antibodies
Short Description	
Applications	WB/ELISA
Host/Source	Rabbit
Reactivity	Human/Mouse

PRODUCT PROPERTIES

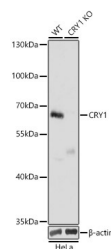
Clonality	Polyclonal
Clone ID	
Concentration	Lot specific
Conjugation	Unconjugated
Purification	Affinity purification
Dilution Range	WB:1:500-1:1000 ELISA:Recommended starting concentration is 1 μ g/mL. Please optimize the concentration based on your specific assay requirements.
Formulation	PBS with 0.05% Proclin300, 50% Glycerol, pH 7.3.
Isotype	IgG
Storage Instruction	Store at -20°C for up to 1 year from the date of receipt, and avoid repeat freeze-thaw cycles.

TARGET INFORMATION

Gene ID	1407
Gene Symbol	CRY1
Uniprot ID	CRY1_HUMAN
Immunogen	
Immunogen Region	496-586
Specificity	Recombinant fusion protein containing a sequence corresponding to amino acids 496-586 of human CRY1 (NP_004066.1).
Immunogen Sequence	GLGLLASVPSNPNGNGGFMG YSAENIPGCSSSGSCSQSG ILHYAHGDSQQTHLLKQGRS SMGTGLSGGKRPSQEEDTQS IGPKVQRQSTN



Western blot analysis of extracts of Y79 cells, using CRY1 antibody (STJ115622) at 1:600 dilution. Secondary antibody: HRP Goat Anti-rabbit IgG (H+L) (STJS000856) at 1:10000 dilution. Lysates/proteins: 25 μ g per lane. Blocking buffer: 3% non-fat dry milk in TBST. Detection: ECL Basic Kit. Exposure time: 30s.



Western blot analysis of extracts from wild type (WT) and CRY1 knockout (KO) HeLa (KO) cells, using CRY1 antibody (STJ115622) at 1:1000 dilution. Secondary antibody: HRP Goat Anti-rabbit IgG (H+L) (STJS000856) at 1:10000 dilution. Lysates/proteins: 25 μ g per lane. Blocking buffer: 3% non-fat dry milk in TBST. Detection: ECL Basic Kit. Exposure time: 10s.

This product is suitable for in-vitro studies under the RESEARCH USE ONLY [RUO] licence. This product must not be used as for diagnostic or other medical purposes.
St John's Laboratory Ltd, Knowledge Dock Business Centre, University Way, London, E16 2RD | Tel: 0208 223 3081