

Anti-CP antibody (680-790) (STJ115616)

STJ115616

GENERAL INFORMATION

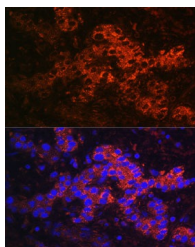
Product Type	Primary antibodies
Short Description	
Applications	IF/ICC/ELISA
Host/Source	Rabbit
Reactivity	Human/Mouse/Rat

PRODUCT PROPERTIES

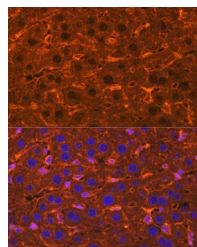
Clonality	Polyclonal
Clone ID	
Concentration	Lot specific
Conjugation	Unconjugated
Purification	Affinity purification
Dilution Range	IF/ICC:1:50-1:200 ELISA: Recommended starting concentration is 1 µg/mL. Please optimize the concentration based on your specific assay requirements.
Formulation	PBS with 0.09% Sodium Azide, 50% Glycerol, pH 7.3.
Isotype	IgG
Storage	Store at -20°C for up to 1 year from the date of receipt, and avoid repeat freeze-thaw cycles.
Instruction	

TARGET INFORMATION

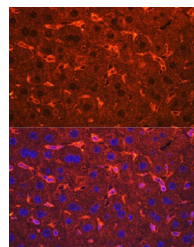
Gene ID	1356
Gene Symbol	CP
Uniprot ID	CERU_HUMAN
Immunogen	
Immunogen Region	680-790
Specificity	Recombinant fusion protein containing a sequence corresponding to amino acids 680-790 of human Ceruloplasmin (NP_000087.1).
Immunogen Sequence	QTSLLHMQPDTEGTFNVEC LTDDHYTGGMKQKYTVNQCR RQSEDSTFYLGERTYYIAAV EVEWDYSPQREWEKELHHLQ EQNVSN AFLDKGEFYIGSKY KKVVYRQYTD



Immunofluorescence analysis of Human liver cancer cells using Ceruloplasmin Rabbit polyclonal antibody (STJ115616) at dilution of 1:100. Blue: DAPI for nuclear staining.



Immunofluorescence analysis of Rat liver cells using Ceruloplasmin Rabbit polyclonal antibody (STJ115616) at dilution of 1:100. Blue: DAPI for nuclear staining.



Immunofluorescence analysis of Mouse liver cells using Ceruloplasmin Rabbit polyclonal antibody (STJ115616) at dilution of 1:100. Blue: DAPI for nuclear staining.

This product is suitable for in-vitro studies under the RESEARCH USE ONLY [RUO] licence. This product must not be used as for diagnostic or other medical purposes.
St John's Laboratory Ltd, Knowledge Dock Business Centre, University Way, London, E16 2RD | Tel: 0208 223 3081