

Anti-SLC34A1 antibody (562-639) (STJ115594)

STJ115594

GENERAL INFORMATION

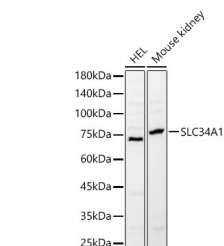
Product Type	Primary antibodies
Short Description	
Applications	WB/ELISA
Host/Source	Rabbit
Reactivity	Human/Mouse/Rat

PRODUCT PROPERTIES

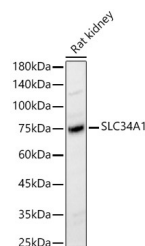
Clonality	Polyclonal
Clone ID	
Concentration	Lot specific
Conjugation	Unconjugated
Purification	Affinity purification
Dilution Range	WB:1:1000-1:5000 ELISA:Recommended starting concentration is 1 µg/mL. Please optimize the concentration based on your specific assay requirements.
Formulation	PBS with 0.02% Sodium Azide, 50% Glycerol, pH 7.3.
Isotype	IgG
Storage Instruction	Store at -20°C for up to 1 year from the date of receipt, and avoid repeat freeze-thaw cycles.

TARGET INFORMATION

Gene ID	6569
Gene Symbol	SLC34A1
Uniprot ID	NPT2A_HUMAN
Immunogen	
Immunogen Region	562-639
Specificity	Recombinant fusion protein containing a sequence corresponding to amino acids 562-639 of human SLC34A1 (NP_003043.3).
Immunogen Sequence	QSRSPGHLPKWLQTWDFLPR WMHSLKPLDHLITRATLCCA RPEPRSPPLPPRVFLEELPP ATPSPRLALPAHHNATRL



Western blot analysis of various lysates, using SLC34A1 rabbit polyclonal antibody (STJ115594) at 1:2000 dilution. Secondary antibody: HRP Goat Anti-rabbit IgG (H+L) (STJS000856) at 1:10000 dilution. Lysates/proteins: 25 µg per lane. Blocking buffer: 3% non-fat dry milk in TBST. Detection: ECL Basic Kit. Exposure time: 5s.



Western blot analysis of Rat kidney, using SLC34A1 rabbit polyclonal antibody (STJ115594) at 1:2000 dilution. Secondary antibody: HRP Goat Anti-rabbit IgG (H+L) (STJS000856) at 1:10000 dilution. Lysates/proteins: 25 µg per lane. Blocking buffer: 3% non-fat dry milk in TBST. Detection: ECL Basic Kit. Exposure time: 5s.

This product is suitable for in-vitro studies under the RESEARCH USE ONLY [RUO] licence. This product must not be used as for diagnostic or other medical purposes.
St John's Laboratory Ltd, Knowledge Dock Business Centre, University Way, London, E16 2RD | Tel: 0208 223 3081