

Anti-CD177 antibody (35-285) (STJ115558)

STJ115558

GENERAL INFORMATION

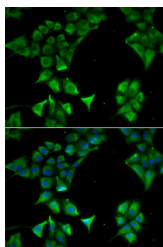
Product Type	Primary antibodies
Short Description	
Applications	IF/ICC/ELISA
Host/Source	Rabbit
Reactivity	Human

PRODUCT PROPERTIES

Clonality	Polyclonal
Clone ID	
Concentration	Lot specific
Conjugation	Unconjugated
Purification	Affinity purification
Dilution	IF/ICC:1:50-1:200
Range	ELISA:Recommended starting concentration is 1 µg/mL. Please optimize the concentration based on your specific assay requirements.
Formulation	PBS with 0.02% Sodium Azide, 50% Glycerol, pH 7.3.
Isotype	IgG
Storage	Store at -20°C for up to 1 year from the date of receipt, and avoid repeat freeze-thaw cycles.
Instruction	

TARGET INFORMATION

Gene ID	57126
Gene Symbol	CD177
Uniprot ID	CD177_HUMAN
Immunogen	
Immunogen Region	35-285
Specificity	Recombinant fusion protein containing a sequence corresponding to amino acids 35-285 of human CD177 (NP_065139.2).
Immunogen Sequence	VSDLPRQWTPKNTSCDSGLG CQDTLMJESGPQVSLVLSK GCTEAKDQEPRVTEHRMGPG LSLISYTFVCRQEDFCNNLV NSLPLWAPQPPADPGSLRCP VCLSMEGCLEGTTEECPKG TTHCYDGLLRLRGGGIFSNL RVQGCMPQPVCNLLNGTQEI GPVGMTENCDMKDLTCHRG TTIMTHGNLAQEPTDWTTSN TEMCEVGQVCQETLLLDVG LTSTLVGKGCSTVGAQNS



Immunofluorescence analysis of HeLa cells using CD177 antibody (STJ115558). Blue: DAPI for nuclear staining.