

## Anti-TFAM antibody (100-200) (STJ115513)

STJ115513

### GENERAL INFORMATION

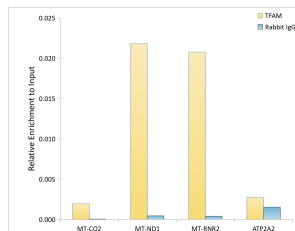
<b>Product Type</b>	Primary antibodies
<b>Short Description</b>	
<b>Applications</b>	WB/IHC-P/IF/ICC/ELISA/ChIP
<b>Host/Source</b>	Rabbit
<b>Reactivity</b>	Human/Mouse/Rat

### PRODUCT PROPERTIES

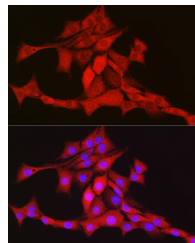
<b>Clonality</b>	Polyclonal
<b>Clone ID</b>	
<b>Concentration</b>	Lot specific
<b>Conjugation</b>	Unconjugated
<b>Purification</b>	Affinity purification
<b>Dilution Range</b>	WB:1:500-1:1000 IHC-P:1:50-1:200 IF/ICC:1:50-1:200 ELISA:Recommended starting concentration is 1 Mu g/mL. Please optimize the concentration based on your specific assay requirements. ChIP:5 Mu g antibody for 10 Mu g-15 Mu g of Chromat
<b>Formulation</b>	PBS with 0.05% Proclin300, 50% Glycerol, pH 7.3.
<b>Isotype</b>	IgG
<b>Storage</b>	Store at -20°C for up to 1 year from the date of receipt, and avoid repeat freeze-thaw cycles.
<b>Instruction</b>	

### TARGET INFORMATION

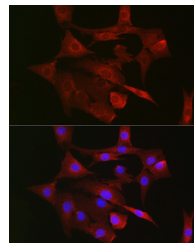
<b>Gene ID</b>	7019
<b>Gene Symbol</b>	TFAM
<b>Uniprot ID</b>	TFAM_HUMAN
<b>Immunogen</b>	
<b>Immunogen Region</b>	100-200
<b>Specificity</b>	A synthetic peptide corresponding to a sequence within amino acids 100-200 of human TFAM (NP_003192.1).
<b>Immunogen Sequence</b>	QDAYRAEWQVYKEEISRFKE QLTPSQIMSLEKEIMDKHLK RKAMTKKKELTLLGKPKRPR SAYNVVYAERFQEAAGDSPQ EKLKTVKENWKNLSDSEKEL Y



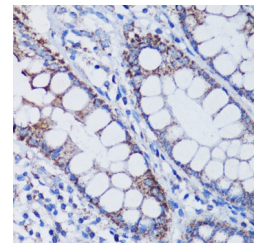
Chromatin immunoprecipitation analysis of extracts of K-562 cells, using TFAM antibody (STJ115513) and rabbit IgG. The amount of immunoprecipitated DNA was checked by quantitative PCR. Histogram was constructed by the ratios of the immunoprecipitated DNA to the input.



Immunofluorescence analysis of PC-12 cells using TFAM Rabbit polyclonal antibody (STJ115513) at dilution of 1:100 (40x lens). Secondary antibody: Cy3 Goat Anti-Rabbit IgG (H+L) at 1:500 dilution. Blue: DAPI for nuclear staining.



Immunofluorescence analysis of NIH/3T3 cells using TFAM Rabbit polyclonal antibody (STJ115513) at dilution of 1:100 (40x lens). Secondary antibody: Cy3 Goat Anti-Rabbit IgG (H+L) at 1:500 dilution. Blue: DAPI for nuclear staining.



Immunohistochemistry analysis of TFAM in paraffin-embedded human colon using TFAM Rabbit polyclonal antibody (STJ115513) at dilution of 1:100 (40x lens). Perform microwave antigen retrieval with 10 mM PBS buffer pH 7.2 before commencing with immunohistochemistry staining protocol.

This product is suitable for in-vitro studies under the RESEARCH USE ONLY [RUO] licence. This product must not be used as for diagnostic or other medical purposes.  
St John's Laboratory Ltd, Knowledge Dock Business Centre, University Way, London, E16 2RD | Tel: 0208 223 3081