

Anti-TRIM21 antibody (86-334) (STJ115508)

STJ115508

GENERAL INFORMATION

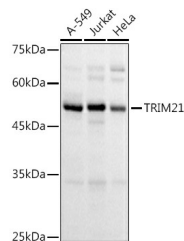
Product Type	Primary antibodies
Short Description	
Applications	WB/IHC-P/IF/ICC/IP/ELISA
Host/Source	Rabbit
Reactivity	Human/Mouse/Rat

PRODUCT PROPERTIES

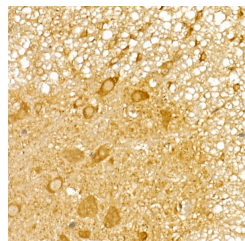
Clonality	Polyclonal
Clone ID	
Concentration	Lot specific
Conjugation	Unconjugated
Purification	Affinity purification
Dilution	WB:1:500-1:1000
Range	IHC-P:1:50-1:200 IF/ICC:1:50-1:200 IP:0.5 Mu g-4 Mu g antibody for 200 Mu g-400 Mu g extracts of whole cells ELISA:Recommended starting concentration is 1 Mu g/mL. Please optimize the concentration based on your specif PBS with 0.05% Proclin300, 50% Glycerol, pH 7.3.
Formulation	
Isotype	IgG
Storage	Store at-20°C for up to 1 year from the date of receipt, and avoid repeat freeze-thaw cycles.
Instruction	

TARGET INFORMATION

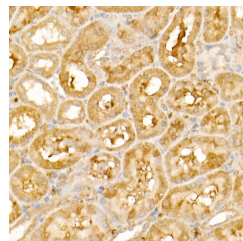
Gene ID	6737
Gene Symbol	TRIM21
Uniprot ID	RO52_HUMAN
Immunogen	
Immunogen Region	86-334
Specificity	Recombinant fusion protein containing a sequence corresponding to amino acids 86-334 of human TRIM21/SS-A (NP_003132.2).
Immunogen Sequence	GTQGERCAVHGERLHLFCEK DGKALCWVCAQSRKHRDHAM VPLEEAAQEYQEKQLQVALGE LRRKQELAEKLEVEIAIKRA DWKKTVETQKSRIHAFFVQQ KNFLVEEQRLQLELEKDER EQLRILGEKEAKLAQQSQAL QELISELDRRCHSSALELLQ EVIIVLERSESNLKDLDIT SPELRVSVCHVPLGKMKMLRTC AVHTILDPTANPWILSED RRQVRLGDTQSQIPGNEER



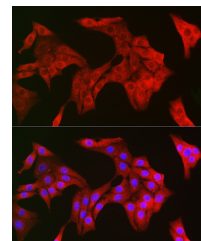
Western blot analysis of extracts of various cell lines, using TRIM21/SS-A antibody (STJ115508) at 1:1000 dilution. Secondary antibody: HRP Goat Anti-rabbit IgG (H+L) (STJS000858) at 1:10000 dilution. Lysates/proteins: 25 Mu g per lane. Blocking buffer: 3% non-fat dry milk in TBST. Detection: ECL Basic Kit. Exposure time: 3s.



Immunohistochemistry analysis of paraffin-embedded mouse spinal cord using TRIM21/SS-A rabbit polyclonal antibody (STJ115508) at dilution of 1:50 (40x lens). Perform high pressure antigen retrieval with 10 mM citrate buffer pH 6.0 before commencing with immunohistochemistry staining protocol.



Immunohistochemistry analysis of paraffin-embedded rat kidney using TRIM21/SS-A rabbit polyclonal antibody (STJ115508) at dilution of 1:50 (40x lens). Perform high pressure antigen retrieval with 10 mM citrate buffer pH 6.0 before commencing with immunohistochemistry staining protocol.



Immunofluorescence analysis of NIH/3T3 cells using TRIM21/SS-A rabbit polyclonal antibody (STJ115508) at dilution of 1:100 (40x lens). Blue: DAPI for nuclear staining.

This product is suitable for in-vitro studies under the RESEARCH USE ONLY [RUO] licence. This product must not be used as for diagnostic or other medical purposes.
St John's Laboratory Ltd, Knowledge Dock Business Centre, University Way, London, E16 2RD | Tel: 0208 223 3081