

Anti-PSMC5 antibody (127-406) (STJ115498)

GENERAL INFORMATION

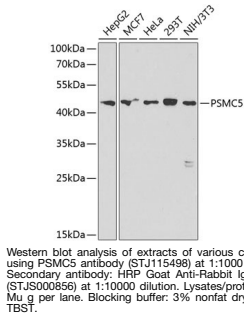
Product Type	Primary antibodies
Short Description	
Applications	WB/ELISA
Host/Source	Rabbit
Reactivity	Human/Mouse

PRODUCT PROPERTIES

Clonality	Polyclonal
Clone ID	
Concentration	Lot specific
Conjugation	Unconjugated
Purification	Affinity purification
Dilution	WB:1:500-1:2000
Range	ELISA:Recommended starting concentration is 1 Mu g/mL. Please optimize the concentration based on your specific assay requirements.
Formulation	PBS with 0.02% Sodium Azide, 50% Glycerol, pH 7.3.
Isotype	IgG
Storage	Store at -20°C for up to 1 year from the date of receipt, and avoid repeat freeze-thaw cycles.
Instruction	

TARGET INFORMATION

Gene ID	5705
Gene Symbol	PSMC5
Uniprot ID	PRS8_HUMAN
Immunogen	
Immunogen Region	127-406
Specificity	Recombinant fusion protein containing a sequence corresponding to amino acids 127-406 of human PSMC5 (NP_002796.4).
Immunogen Sequence	LPNKVDPLVSLMMVEKVPDS TYEMIGGLDKQIKEIKEVIE LPVKHPELFEALGIAQPKGV LLYGPPGTGKTLLARAVAHH TDCTFIRVSGSELVQKFGE GARMVRELFVMAREHAPSII FMDEIDSGSSRLEGGSGGD SEVQRTMLELLNQLDGFAT KNIKVIMATNRDILDSALL RPGRIDRKIEFPPNNEEARL DILKIHSRKMNLTRGINLRK IAEIMPASGAEVKGVCTE



This product is suitable for in-vitro studies under the RESEARCH USE ONLY [RUO] licence. This product must not be used as for diagnostic or other medical purposes.
St John's Laboratory Ltd, Knowledge Dock Business Centre, University Way, London, E16 2RD | Tel: 0208 223 3081