

Anti-PPP1CB antibody (1-327) (STJ115490)

STJ115490

GENERAL INFORMATION

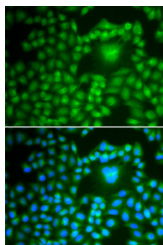
Product Type	Primary antibodies
Short Description	
Applications	WB/IF/ICC/ELISA
Host/Source	Rabbit
Reactivity	Human

PRODUCT PROPERTIES

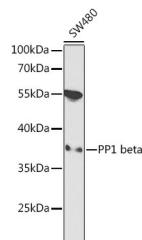
Clonality	Polyclonal
Clone ID	
Concentration	Lot specific
Conjugation	Unconjugated
Purification	Affinity purification
Dilution	WB:1:500-1:2000
Range	IF/CC:1:50-1:200
	ELISA:Recommended starting concentration is 1 Mu g/mL. Please optimize the concentration based on your specific assay requirements.
Formulation	PBS with 0.02% Sodium Azide, 50% Glycerol, pH 7.3.
Isotype	IgG
Storage Instruction	Store at -20°C for up to 1 year from the date of receipt, and avoid repeat freeze-thaw cycles.

TARGET INFORMATION

Gene ID	5500
Gene Symbol	PPP1CB
Uniprot ID	PP1B_HUMAN
Immunogen	
Immunogen Region	1-327
Specificity	Recombinant fusion protein containing a sequence corresponding to amino acids 1-327 of human PP1 beta (NP_002700.1).
Immunogen Sequence	MADGELNVDSLITRLLEVRG CRPGKIVQMTEAEVRGLCIK SREIFLSQPILLELEAPLKI CGDIHGQYTDLLRLFEYGGF PPEANYLFLGDYVDRGKQSL ETICLLLAYKIKYPENFFLL RGNHECASINRIYGFYDECK RRFNIKLRWKTFTDCFNCLPI AAIVDEKIFCCHGGLSPDLQ SMEQIRRMRPDTPDPTGLL CDLLWSDPKDVGWGWGENDR GVSFTFGADVWSKFLNRHD



Immunofluorescence analysis of U2OS cells using PP1 beta antibody (STJ115490). Blue: DAPI for nuclear staining.



Western blot analysis of extracts of SW480 cells, using PP1 beta antibody (STJ115490) at 1:1000 dilution. Secondary antibody: HRP Goat Anti-Rabbit IgG (H+L) (STJ3000856) at 1:10000 dilution. Lysates/proteins: 25 Mu g per lane. Blocking buffer: 3% nonfat dry milk in TBST.

This product is suitable for in-vitro studies under the RESEARCH USE ONLY [RUO] licence. This product must not be used as for diagnostic or other medical purposes.
St John's Laboratory Ltd, Knowledge Dock Business Centre, University Way, London, E16 2RD | Tel: 0208 223 3081