

## Anti-MCM5 antibody (1-230) (STJ115475)

STJ115475

### GENERAL INFORMATION

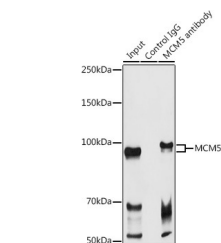
<b>Product Type</b>	Primary antibodies
<b>Short Description</b>	
<b>Applications</b>	WB/IHC-P/IF/ICC/IP/ELISA
<b>Host/Source</b>	Rabbit
<b>Reactivity</b>	Human/Mouse/Rat

### PRODUCT PROPERTIES

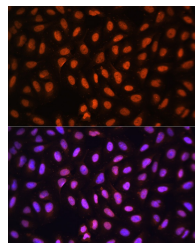
<b>Clonality</b>	Polyclonal
<b>Clone ID</b>	
<b>Concentration</b>	Lot specific
<b>Conjugation</b>	Unconjugated
<b>Purification</b>	Affinity purification
<b>Dilution Range</b>	WB:1:500-1:2000 IHC-P:1:50-1:200 IF/ICC:1:50-1:200 IP:0.5 Mu g-4 Mu g antibody for 200 Mu g-400 Mu g extracts of whole cells ELISA:Recommended starting concentration is 1 Mu g/mL. Please optimize the concentration based on your specif
<b>Formulation</b>	PBS with 0.02% Sodium Azide, 50% Glycerol, pH 7.3.
<b>Isotype</b>	IgG
<b>Storage Instruction</b>	Store at-20°C for up to 1 year from the date of receipt, and avoid repeat freeze-thaw cycles.

### TARGET INFORMATION

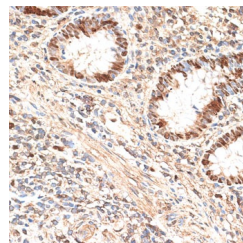
<b>Gene ID</b>	4174
<b>Gene Symbol</b>	MCM5
<b>Uniprot ID</b>	MCM5_HUMAN
<b>Immunogen</b>	
<b>Immunogen Region</b>	1-230
<b>Specificity</b>	Recombinant fusion protein containing a sequence corresponding to amino acids 1-230 of human MCM5 (NP_006730.2).
<b>Immunogen Sequence</b>	MSGFDDPGIFYSDSFGGDAQ ADEGQARKSQLQRRFKEFLR QYRVGTDRTGFTFKYRDELK RHYNLGEYWIEVEMEDLASF DEDLADLYLKQPAEHLQLE EAAKEVADEVTRPRPSGEEV LQDIQVMLKSDASPSSIRSL KSDMMSHLVKIPGIIIAASA VRAKATRISIQCRSCRNTLT NIAMRPGLEGYALPRKCN TD QAGRPKCPLDPYFIMPDKCK CVDFTQLKLQ



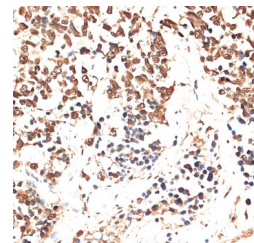
Immunoprecipitation analysis of 300 Mu g extracts of Raji cells using 3 Mu g MCM5 antibody (STJ115475). Western blot was performed from the immunoprecipitate using MCM5 antibody (STJ115475) at a dilution of 1:1000.



Immunofluorescence analysis of U-2 OS cells using MCM5 Rabbit polyclonal antibody (STJ115475) at dilution of 1:100 (40x lens). Secondary antibody: Cy3 Goat Anti-Rabbit IgG (H+L) at 1:500 dilution. Blue: DAPI for nuclear staining.



Immunohistochemistry analysis of MCM5 in paraffin-embedded human appendix using MCM5 Rabbit polyclonal antibody (STJ115475) at dilution of 1:100 (40x lens). Perform microwave antigen retrieval with 10 mM PBS buffer pH 7.2 before commencing with immunohistochemistry staining protocol.



Immunohistochemistry analysis of MCM5 in paraffin-embedded human lung cancer using MCM5 Rabbit polyclonal antibody (STJ115475) at dilution of 1:100 (40x lens). Perform microwave antigen retrieval with 10 mM PBS buffer pH 7.2 before commencing with immunohistochemistry staining protocol.

This product is suitable for in-vitro studies under the RESEARCH USE ONLY [RUO] licence. This product must not be used as for diagnostic or other medical purposes.  
St John's Laboratory Ltd, Knowledge Dock Business Centre, University Way, London, E16 2RD | Tel: 0208 223 3081