

Anti-ELF3 antibody (1-280) (STJ115450)
STJ115450

GENERAL INFORMATION

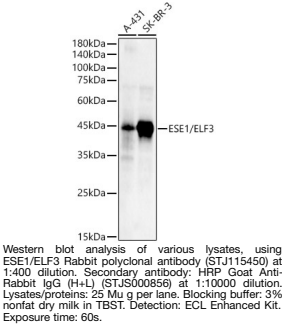
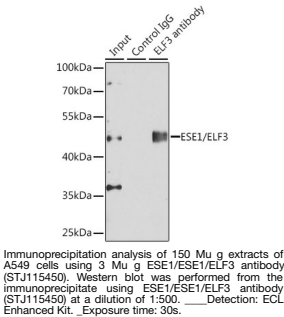
Product Type	Primary antibodies
Short Description	
Applications	WB/IP/ELISA
Host/Source	Rabbit
Reactivity	Human/Mouse

PRODUCT PROPERTIES

Clonality	Polyclonal
Clone ID	
Concentration	Lot specific
Conjugation	Unconjugated
Purification	Affinity purification
Dilution	WB:1:100-1:500
Range	IP:0.5 Mu g-4 Mu g antibody for 200 Mu g-400 Mu g extracts of whole cells ELISA:Recommended starting concentration is 1 Mu g/mL. Please optimize the concentration based on your specific assay requirements.
Formulation	PBS with 0.02% Sodium Azide, 50% Glycerol, pH 7.3.
Isotype	IgG
Storage Instruction	Store at-20°C for up to 1 year from the date of receipt, and avoid repeat freeze-thaw cycles.

TARGET INFORMATION

Gene ID	1999
Gene Symbol	ELF3
Uniprot ID	ELF3_HUMAN
Immunogen	
Immunogen Region	1-280
Specificity	Recombinant fusion protein containing a sequence corresponding to amino acids 1-280 of human ESE1/ESE1/ELF3 (NP_004424.3).
Immunogen Sequence	MAATCEISNIFSNYFSAMYS SEDSTLASVPPAATFGADDL VLTLSNPQMSLEGTEKASWL GEQPQFWSKTQVLDWISYQV EKNKYDASAIIDFSRCDMDGA TLCNCALEELRLVFGPLGDQ LHAQLRDLTSSSSDELWII ELLEKDGMAFQEALDPGPF QGSPFAQELLDGQQASPYH PGSCGAGAPSPGSSDVSTAG TGASRSSHSSDSGGSDVDLD PTDGKLFPSDGFDRDCKKGD



This product is suitable for in-vitro studies under the RESEARCH USE ONLY [RUO] licence. This product must not be used as for diagnostic or other medical purposes.
St John's Laboratory Ltd, Knowledge Dock Business Centre, University Way, London, E16 2RD | Tel: 0208 223 3081