

## Anti-CYP3A4 antibody (244-503) (STJ115444)

STJ115444

### GENERAL INFORMATION

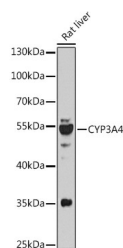
|                          |                    |
|--------------------------|--------------------|
| <b>Product Type</b>      | Primary antibodies |
| <b>Short Description</b> |                    |
| <b>Applications</b>      | WB/ELISA           |
| <b>Host/Source</b>       | Rabbit             |
| <b>Reactivity</b>        | Human/Mouse/Rat    |

### PRODUCT PROPERTIES

|                      |   |
|----------------------|---|
| <b>Clonality</b>     | Polyclonal  |
| <b>Clone ID</b>      |   |
| <b>Concentration</b> | Lot specific  |
| <b>Conjugation</b>   | Unconjugated  |
| <b>Purification</b>  | Affinity purification   |
| <b>Dilution</b>      | WB:1:500-1:1000   |
| <b>Range</b>         | ELISA:Recommended starting concentration is 1 µg/mL. Please optimize the concentration based on your specific assay requirements. |
| <b>Formulation</b>   | PBS with 0.02% Sodium Azide, 50% Glycerol, pH 7.3.  |
| <b>Isotype</b>       | IgG   |
| <b>Storage</b>       | Store at -20°C for up to 1 year from the date of receipt, and avoid repeat freeze-thaw cycles.                                    |
| <b>Instruction</b>   |   |

### TARGET INFORMATION

|                           |  |
|---------------------------|--|
| <b>Gene ID</b>            | 1576   |
| <b>Gene Symbol</b>        | CYP3A4   |
| <b>Uniprot ID</b>         | CP3A4_HUMAN  |
| <b>Immunogen</b>          |  |
| <b>Immunogen Region</b>   | 244-503  |
| <b>Specificity</b>        | Recombinant fusion protein containing a sequence corresponding to amino acids 244-503 of human CYP3A4 (NP_059488.2).<br>EVTNFLRKSVKRMKESRLED TQKHRVDFLQLMIDSONSKE TESHKALSDLELVAQSIIFI FAGYETTSSVLSFIMYELAT<br>HPDVQKQLQEEIDAVLPNKA PPTYDVTQLQMEYLDMMVNET LRLFPIAMRLERVCKKDVEI NGMFIPKGVWMIPSYALHR<br>DPKYWTEPEKFLPERFSKKN KDNIDPYIYTPFGSGPRNCI GMRFALMNMKLALIRVLQNF SFKPCKETQIPLKLSLGGL |
| <b>Immunogen Sequence</b> |  |



Western blot analysis of extracts of Rat liver, using CYP3A4 antibody (STJ115444) at 1:1000 dilution. Secondary antibody: HRP Goat Anti-rabbit IgG (H+L) at 1:10000 dilution. Lysates/proteins: 25 µg per lane. Blocking buffer: 3% nonfat dry milk in TBST. Detection: ECL Basic Kit. Exposure time: 90s.

This product is suitable for in-vitro studies under the RESEARCH USE ONLY [RUO] licence. This product must not be used as for diagnostic or other medical purposes.  
St John's Laboratory Ltd, Knowledge Dock Business Centre, University Way, London, E16 2RD | Tel: 0208 223 3081