

Anti-RBBP7 antibody (1-230) (STJ115417)

STJ115417

GENERAL INFORMATION

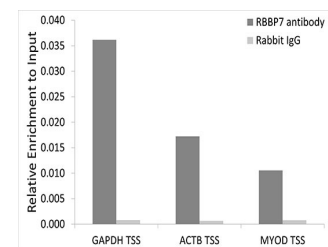
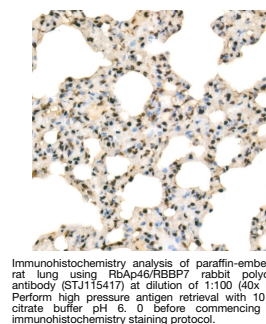
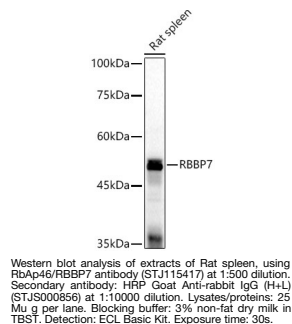
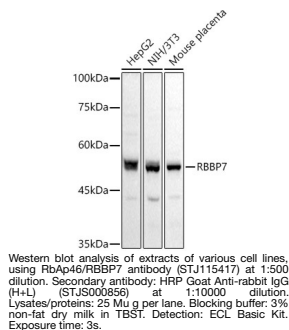
Product Type	Primary antibodies
Short Description	
Applications	WB/IHC-P/IF/ICC/ELISA/ChIP
Host/Source	Rabbit
Reactivity	Human/Mouse/Rat

PRODUCT PROPERTIES

Clonality	Polyclonal
Clone ID	
Concentration	Lot specific
Conjugation	Unconjugated
Purification	Affinity purification
Dilution	WB:1:500-1:1000
Range	IHC-P:1:50-1:200 IF/ICC:1:50-1:200 ELISA:Recommended starting concentration is 1 Mu g/mL. Please optimize the concentration based on your specific assay requirements. ChIP:5 Mu g antibody for 10 Mu g-15 Mu g of Chromat
Formulation	PBS with 0.05% Proclin300, 50% Glycerol, pH 7.3.
Isotype	IgG
Storage Instruction	Store at -20°C for up to 1 year from the date of receipt, and avoid repeat freeze-thaw cycles.

TARGET INFORMATION

Gene ID	5931
Gene Symbol	RBBP7
Uniprot ID	RBBP7_HUMAN
Immunogen	
Immunogen Region	1-230
Specificity	Recombinant fusion protein containing a sequence corresponding to amino acids 1-230 of human RbAp46/RBBP7 (NP_002884.1).
Immunogen Sequence	MASKEMFEDTVEERVINEEY KIWKKNTPLFLYDLMTHALQ WPSLTVQWLPEVTKPEGKDY ALHWLVLTHTSDEQNLHV ARVHIPNDDAQFDASHCDSD KGEFGFGSVTGKIECEIKI NHEGEVNRARYMPQNPPIIA TKTPSSDVLVFDYTKHPAKP DPSGECNPDLRLRGHQKEGY GLSWNSNLGHLASDDHT VCLWDINAGPKGKIVDAKA IFTGHSVAV



This product is suitable for in-vitro studies under the RESEARCH USE ONLY [RUO] licence. This product must not be used as for diagnostic or other medical purposes.
St John's Laboratory Ltd, Knowledge Dock Business Centre, University Way, London, E16 2RD | Tel: 0208 223 3081