

Anti-CYCS antibody (1-105) (STJ115391)

STJ115391

GENERAL INFORMATION

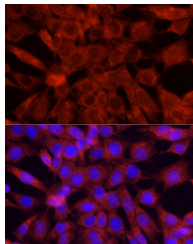
Product Type	Primary antibodies
Short Description	
Applications	WB/IHC-P/IF/ICC/ELISA
Host/Source	Rabbit
Reactivity	Human/Mouse/Rat

PRODUCT PROPERTIES

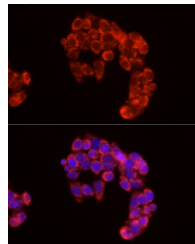
Clonality	Polyclonal
Clone ID	
Concentration	Lot specific
Conjugation	Unconjugated
Purification	Affinity purification
Dilution Range	WB:1:500-1:2000 IHC-P:1:50-1:200 IF/ICC:1:50-1:200 ELISA:Recommended starting concentration is 1 µg/mL. Please optimize the concentration based on your specific assay requirements.
Formulation	PBS with 0.02% Sodium Azide, 50% Glycerol, pH 7.3.
Isotype	IgG
Storage	Store at -20°C for up to 1 year from the date of receipt, and avoid repeat freeze-thaw cycles.
Instruction	

TARGET INFORMATION

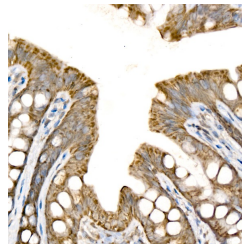
Gene ID	54205
Gene Symbol	CYC
Uniprot ID	CYC_HUMAN
Immunogen	
Immunogen Region	1-105
Specificity	Recombinant fusion protein containing a sequence corresponding to amino acids 1-105 of human Cytochrome C (NP_061820.1).
Immunogen Sequence	MGDVEKGKKIFIMKCSQCHT VEKGGKHKTGPNLHGLFGRK TQQAPGYSYTAANKNKGIW GEDTLMEYLENPKKYIPGK MIFVGIKKKEERADLIAYLK KATNE



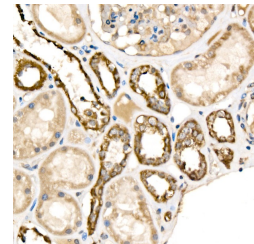
Immunofluorescence analysis of NIH/3T3 cells using Cytochrome C Rabbit polyclonal antibody (STJ115391) at dilution of 1:50 (40x lens). Secondary antibody: Cy3 Goat Anti-Rabbit IgG (H+L) at 1:500 dilution. Blue: DAPI for nuclear staining.



Immunofluorescence analysis of HepG2 cells using Cytochrome C Rabbit polyclonal antibody (STJ115391) at dilution of 1:50 (40x lens). Secondary antibody: Cy3 Goat Anti-Rabbit IgG (H+L) at 1:500 dilution. Blue: DAPI for nuclear staining.



Immunohistochemistry analysis of Cytochrome C in paraffin-embedded rat colon using Cytochrome C Rabbit polyclonal antibody (STJ115391) at dilution of 1:50 (40x lens). Perform high pressure antigen retrieval with 10 mM citrate buffer pH 6.0 before commencing with immunohistochemistry staining protocol.



Immunohistochemistry analysis of Cytochrome C in paraffin-embedded human kidney using Cytochrome C Rabbit polyclonal antibody (STJ115391) at dilution of 1:50 (40x lens). Perform high pressure antigen retrieval with 10 mM citrate buffer pH 6.0 before commencing with immunohistochemistry staining protocol.

This product is suitable for in-vitro studies under the RESEARCH USE ONLY [RUO] licence. This product must not be used as for diagnostic or other medical purposes.
St John's Laboratory Ltd, Knowledge Dock Business Centre, University Way, London, E16 2RD | Tel: 0208 223 3081