

## Anti-CXXC1 antibody (1-210) (STJ115384)

STJ115384

### GENERAL INFORMATION

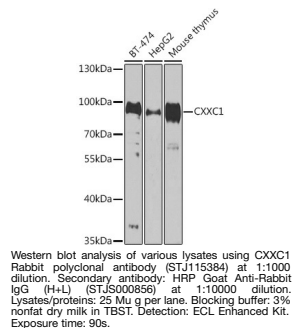
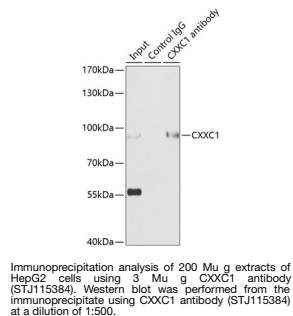
<b>Product Type</b>	Primary antibodies
<b>Short Description</b>	
<b>Applications</b>	WB/IP/ELISA
<b>Host/Source</b>	Rabbit
<b>Reactivity</b>	Human/Mouse

### PRODUCT PROPERTIES

<b>Clonality</b>	Polyclonal
<b>Clone ID</b>	
<b>Concentration</b>	Lot specific
<b>Conjugation</b>	Unconjugated
<b>Purification</b>	Affinity purification
<b>Dilution</b>	WB:1:500-1:2000
<b>Range</b>	IP:0.5 Mu g-4 Mu g antibody for 200 Mu g extracts of whole cells ELISA:Recommended starting concentration is 1 Mu g/mL. Please optimize the concentration based on your specific assay requirements.
<b>Formulation</b>	PBS with 0.02% Sodium Azide, 50% Glycerol, pH 7.3.
<b>Isotype</b>	IgG
<b>Storage</b>	Store at -20°C for up to 1 year from the date of receipt, and avoid repeat freeze-thaw cycles.
<b>Instruction</b>	

### TARGET INFORMATION

<b>Gene ID</b>	30827
<b>Gene Symbol</b>	CXXC1
<b>Uniprot ID</b>	CXXC1_HUMAN
<b>Immunogen</b>	
<b>Immunogen Region</b>	1-210
<b>Specificity</b>	Recombinant fusion protein containing a sequence corresponding to amino acids 1-210 of human CXXC1 (NP_001095124.1).
<b>Immunogen Sequence</b>	MEGDGSDPEPPDAGEDSKSE NGENAPIYICIRKPDINCFM IGCDNCNEWFHGDICIRITEK MAKAIREWYCEREKDPKL EIRYRHKKSRERDGNERDSS EPRDEGGGRKRPVDPDLQR RAGSGTGVGAMLARGSASPH KSSPQPLVATPSQHHQQQQQ QIKRSARMCGECEACRRTED CGHCDFCRDMKKFGGPNKIR QKCRLRQCQL



This product is suitable for in-vitro studies under the RESEARCH USE ONLY [RUO] licence. This product must not be used as for diagnostic or other medical purposes.  
St John's Laboratory Ltd, Knowledge Dock Business Centre, University Way, London, E16 2RD | Tel: 0208 223 3081