

Anti-PTGES3 antibody (1-110) (STJ115361)

STJ115361

GENERAL INFORMATION

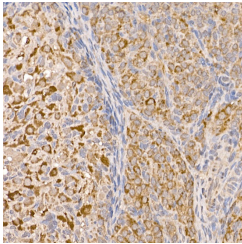
Product Type	Primary antibodies
Short Description	
Applications	IHC-P/ELISA
Host/Source	Rabbit
Reactivity	Human/Mouse/Rat

PRODUCT PROPERTIES

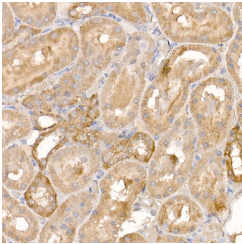
Clonality	Polyclonal
Clone ID	
Concentration	Lot specific
Conjugation	Unconjugated
Purification	Affinity purification
Dilution Range	IHC-P:1:50-1:200 ELISA:Recommended starting concentration is 1 Mu g/mL. Please optimize the concentration based on your specific assay requirements.
Formulation	PBS with 0.02% Sodium Azide, 50% Glycerol, pH 7.3.
Isotype	IgG
Storage Instruction	Store at -20°C for up to 1 year from the date of receipt, and avoid repeat freeze-thaw cycles.

TARGET INFORMATION

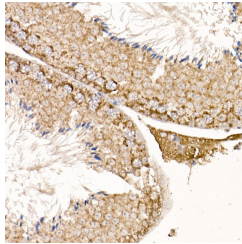
Gene ID	10728
Gene Symbol	PTGES3
Uniprot ID	TEBP_HUMAN
Immunogen	
Immunogen Region	1-110
Specificity	Recombinant fusion protein containing a sequence corresponding to amino acids 1-110 of human P23/P23/PTGES3 (NP_006592.3).
Immunogen Sequence	MQPASAKWYDRRDYVFIEFC VEDSKDVNVNFEKSKLTFSC LGGSDNFKHLNEIDLFHCID PNDSKHKRTDRSILCCLRKG ESGQSWPRLTKERAKLNWLS VDFNNWKDWE



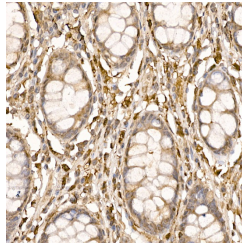
Immunohistochemistry analysis of paraffin-embedded rat ovary using P23/PTGES3 Rabbit polyclonal antibody (STJ115361) at dilution of 1:200 (40x lens). Perform high pressure antigen retrieval with 10 mM citrate buffer pH 6.0 before commencing with immunohistochemistry staining protocol.



Immunohistochemistry analysis of paraffin-embedded rat kidney using P23/PTGES3 Rabbit polyclonal antibody (STJ115361) at dilution of 1:200 (40x lens). Perform high pressure antigen retrieval with 10 mM citrate buffer pH 6.0 before commencing with immunohistochemistry staining protocol.



Immunohistochemistry analysis of paraffin-embedded mouse testis using P23/PTGES3 Rabbit polyclonal antibody (STJ115361) at dilution of 1:200 (40x lens). Perform high pressure antigen retrieval with 10 mM citrate buffer pH 6.0 before commencing with immunohistochemistry staining protocol.



Immunohistochemistry analysis of paraffin-embedded human colon using P23/PTGES3 Rabbit polyclonal antibody (STJ115361) at dilution of 1:200 (40x lens). Perform high pressure antigen retrieval with 10 mM citrate buffer pH 6.0 before commencing with immunohistochemistry staining protocol.

This product is suitable for in-vitro studies under the RESEARCH USE ONLY [RUO] licence. This product must not be used as for diagnostic or other medical purposes.
St John's Laboratory Ltd, Knowledge Dock Business Centre, University Way, London, E16 2RD | Tel: 0208 223 3081