

Anti-TNFRSF11A antibody (466-616) (STJ115344)

STJ115344

GENERAL INFORMATION

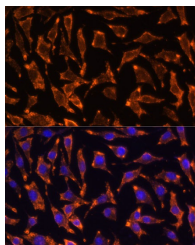
Product Type	Primary antibodies
Short Description	
Applications	WB/IHC-P/IF/ICC/ELISA
Host/Source	Rabbit
Reactivity	Human/Mouse/Rat

PRODUCT PROPERTIES

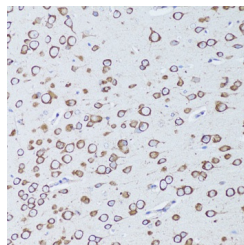
Clonality	Polyclonal
Clone ID	
Concentration	Lot specific
Conjugation	Unconjugated
Purification	Affinity purification
Dilution	WB:1:500-1:2000
Range	IHC-P:1:50-1:100 IF/ICC:1:50-1:100 ELISA:Recommended starting concentration is 1 μ g/mL. Please optimize the concentration based on your specific assay requirements.
Formulation	PBS with 0.01% Thimerosal, 50% Glycerol, pH 7.3.
Isotype	IgG
Storage	Store at -20°C for up to 1 year from the date of receipt, and avoid repeat freeze-thaw cycles.
Instruction	

TARGET INFORMATION

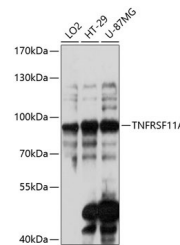
Gene ID	8792
Gene Symbol	TNFRSF11A
Uniprot ID	TNR11_HUMAN
Immunogen	
Region	466-616
Specificity	Recombinant fusion protein containing a sequence corresponding to amino acids 466-616 of human TNFRSF11A (NP_003830.1).
Immunogen Sequence	RGPLPQCAYGMGLPPEEEAS RTEARDQPEDGADGRLPSSA RAGAGSGSSPGGQSPASGNV TGNSNSTFISSGQVMNFKGD IIVVYSQTSQEGAAAAAEP MGRPVEETLARRDSFAGNG PRFPDPCGGPEGLREPEKAS RPVQEQGGA



Immunofluorescence analysis of L929 cells using TNFRSF11A Rabbit polyclonal antibody (STJ115344) at dilution of 1:100 (40x lens). Secondary antibody: Cy3 Goat Anti-Rabbit IgG (H+L) at 1:500 dilution. Blue: DAPI for nuclear staining.



Immunohistochemistry analysis of TNFRSF11A in paraffin-embedded mouse brain using TNFRSF11A Rabbit polyclonal antibody (STJ115344) at dilution of 1:100 (20x lens). Perform microwave antigen retrieval with 10 mM PBS buffer pH 7.2 before commencing with immunohistochemistry staining protocol.



Western blot analysis of various lysates using TNFRSF11A Rabbit polyclonal antibody (STJ115344) at 1:3000 dilution. Secondary antibody: HRP Goat Anti-Rabbit IgG (H+L) (STJ500656) at 1:10000 dilution. Lysates/proteins: 25 μ g per lane. Blocking buffer: 3% nonfat dry milk in TBST. Detection: ECL Basic Kit. Exposure time: 30s.

This product is suitable for in-vitro studies under the RESEARCH USE ONLY [RUO] licence. This product must not be used as for diagnostic or other medical purposes.

St John's Laboratory Ltd, Knowledge Dock Business Centre, University Way, London, E16 2RD | Tel: 0208 223 3081