

Anti-EIF3H antibody (80-340) (STJ115340)
STJ115340

GENERAL INFORMATION

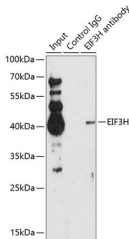
Product Type	Primary antibodies
Short Description	
Applications	WB/IP/IF/ICC/ELISA
Host/Source	Rabbit
Reactivity	Human/Mouse/Rat

PRODUCT PROPERTIES

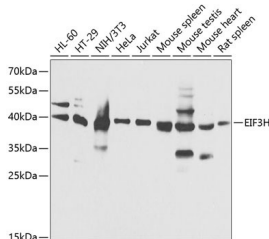
Clonality	Polyclonal
Clone ID	
Concentration	Lot specific
Conjugation	Unconjugated
Purification	Affinity purification
Dilution	WB:1:500-1:2000
Range	IF/CC:1:50-1:200 IP:0.5 Mu g-4 Mu g antibody for 200 Mu g-400 Mu g extracts of whole cells ELISA:Recommended starting concentration is 1 Mu g/mL. Please optimize the concentration based on your specific assay requirements
Formulation	PBS with 0.02% Sodium Azide, 50% Glycerol, pH 7.3.
Isotype	IgG
Storage	Store at-20°C for up to 1 year from the date of receipt, and avoid repeat freeze-thaw cycles.
Instruction	

TARGET INFORMATION

Gene ID	8667
Gene Symbol	EIF3H
Uniprot ID	EIF3H_HUMAN
Immunogen	
Immunogen Region	80-340
Specificity	Recombinant fusion protein containing a sequence corresponding to amino acids 80-340 of human EIF3H (NP_003747.1).
Immunogen Sequence	NCFPFPHQHTEDDADFDEVQY QMEMMRLRHVNIDHLHVGW YQSTYYGSFVTRALLDSQFS YQHAIEESVVLIDPIKTAQ GSLSLKAYRLTPKLMEVCKE KDFSPEALKKANITFEYMF E VPIVIKNSHLINVLWWELE KKSAVADKHELLSLASSNHL GKNLQLLLMDRVDMSQDIVK YNTYMRNTSKQQQKHQYQQ RRQENMQRQSRGEPPLPEE DLSKLFKPPQPPARMDSLL



Immunoprecipitation analysis of 200 Mu g extracts of Jurkat cells using 1 Mu g EIF3H antibody (STJ115340). Western blot was performed from the immunoprecipitate using EIF3H antibody (STJ115340) at a dilution of 1:1000.



Western blot analysis of various lysates using EIF3H Rabbit polyclonal antibody (STJ115340) at 1:1000 dilution. Secondary antibody: HRP Goat Anti-Rabbit IgG (H+L) (STJS000856) at 1:10000 dilution. Lysates/proteins: 25 Mu g per lane. Blocking buffer: 3% nonfat dry milk in TBST. Detection: ECL Basic Kit. Exposure time: 1s.

This product is suitable for in-vitro studies under the RESEARCH USE ONLY [RUO] licence. This product must not be used as for diagnostic or other medical purposes.
St John's Laboratory Ltd, Knowledge Dock Business Centre, University Way, London, E16 2RD | Tel: 0208 223 3081