

Anti-SSNA1 antibody (1-119) (STJ115339)

STJ115339

GENERAL INFORMATION

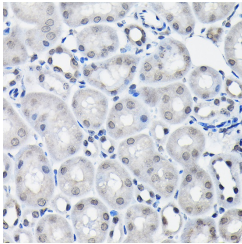
Product Type	Primary antibodies
Short Description	
Applications	WB/IHC-P/ELISA
Host/Source	Rabbit
Reactivity	Human/Mouse/Rat

PRODUCT PROPERTIES

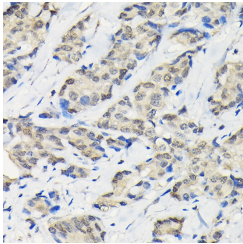
Clonality	Polyclonal
Clone ID	
Concentration	Lot specific
Conjugation	Unconjugated
Purification	Affinity purification
Dilution Range	WB:1:500-1:2000 IHC-P:1:50-1:200 ELISA:Recommended starting concentration is 1 µg/mL. Please optimize the concentration based on your specific assay requirements.
Formulation	PBS with 0.02% Sodium Azide, 50% Glycerol, pH 7.3.
Isotype	IgG
Storage Instruction	Store at -20°C for up to 1 year from the date of receipt, and avoid repeat freeze-thaw cycles.

TARGET INFORMATION

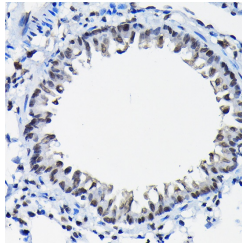
Gene ID	8636
Gene Symbol	SSNA1
Uniprot ID	SSNA1_HUMAN
Immunogen	
Immunogen Region	1-119
Specificity	Recombinant fusion protein containing a sequence corresponding to amino acids 1-119 of human SSNA1 (NP_003722.2).
Immunogen Sequence	MTQQGAALQNYNNELVKCIE ELCQKREELCRQIQEEDEK QRLQNEVRQLTEKLARVNNEN LARKIASRNEFDRTIAETEA AYLKILESSQTLLSVLKREA GNLTKATAPDQKSSGGRRS



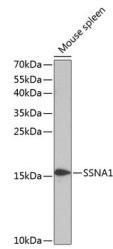
Immunohistochemistry analysis of paraffin-embedded mouse kidney using SSNA1 Rabbit polyclonal antibody (STJ115339) at dilution of 1:100 (40x lens). Perform high pressure antigen retrieval with 10 mM citrate buffer pH 6. 0 before commencing with immunohistochemistry staining protocol.



Immunohistochemistry analysis of paraffin-embedded human breast cancer using SSNA1 Rabbit polyclonal antibody (STJ115339) at dilution of 1:100 (40x lens). Perform high pressure antigen retrieval with 10 mM citrate buffer pH 6. 0 before commencing with immunohistochemistry staining protocol.



Immunohistochemistry analysis of paraffin-embedded rat lung using SSNA1 Rabbit polyclonal antibody (STJ115339) at dilution of 1:100 (40x lens). Perform high pressure antigen retrieval with 10 mM citrate buffer pH 6. 0 before commencing with immunohistochemistry staining protocol.



Western blot analysis of extracts of mouse spleen, using SSNA1 antibody (STJ115339) at 1:1000 dilution. Secondary antibody: HRP Goat Anti-Rabbit IgG (H+L) (STJ/S000856) at 1:10000 dilution. Lysates/proteins: 25 µg per lane. Blocking buffer: 3% nonfat dry milk in TBST. Detection: ECL Enhanced Kit. Exposure time: 90s.

This product is suitable for in-vitro studies under the RESEARCH USE ONLY [RUO] licence. This product must not be used as for diagnostic or other medical purposes.
St John's Laboratory Ltd, Knowledge Dock Business Centre, University Way, London, E16 2RD | Tel: 0208 223 3081