

## Anti-TEAD1 antibody (200-300) (STJ115329)

STJ115329

### GENERAL INFORMATION

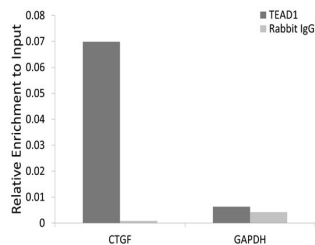
<b>Product Type</b>	Primary antibodies
<b>Short Description</b>	
<b>Applications</b>	WB/IHC-P/IF/ICC/ELISA/ChIP
<b>Host/Source</b>	Rabbit
<b>Reactivity</b>	Human/Mouse/Rat

### PRODUCT PROPERTIES

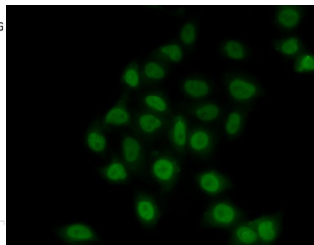
<b>Clonality</b>	Polyclonal
<b>Clone ID</b>	
<b>Concentration</b>	Lot specific
<b>Conjugation</b>	Unconjugated
<b>Purification</b>	Affinity purification
<b>Dilution Range</b>	WB:1:500-1:1000 IHC-P:1:50-1:200 IF/ICC:1:50-1:200 ELISA:Recommended starting concentration is 1 µg/mL. Please optimize the concentration based on your specific assay requirements. ChIP:5 µg antibody for 10 µg-15 µg of Chromat
<b>Formulation</b>	PBS with 0.05% Proclin300, 50% Glycerol, pH 7.3.
<b>Isotype</b>	IgG
<b>Storage</b>	Store at -20°C for up to 1 year from the date of receipt, and avoid repeat freeze-thaw cycles.
<b>Instruction</b>	

### TARGET INFORMATION

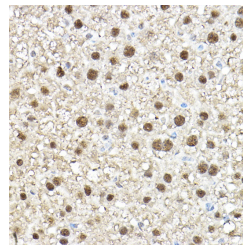
<b>Gene ID</b>	7003
<b>Gene Symbol</b>	TEAD1
<b>Uniprot ID</b>	TEAD1_HUMAN
<b>Immunogen</b>	
<b>Immunogen Region</b>	200-300
<b>Specificity</b>	A synthetic peptide corresponding to a sequence within amino acids 200-300 of human TEAD1 (NP_068780.2).
<b>Immunogen Sequence</b>	APSVPAWQGRSIGTTKLRLV EFSAFLEQQRDPDSYNKHLF VHIGHANHSYSDPLLESVDI RQIYDKFPEKKGGLKELFGK GPQNAFFLVKFWADLNCNIQ D



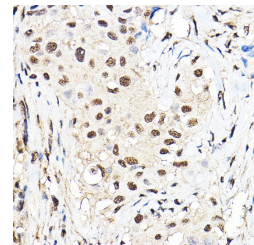
Chromatin immunoprecipitation analysis of extracts of HeLa cell line, using TEAD1 rabbit polyclonal antibody (STJ115329) and rabbit IgG. The amount of immunoprecipitated DNA was checked by quantitative PCR. Histogram was constructed by the ratios of the immunoprecipitated DNA to the input.



Immunofluorescence analysis of MCF7 cells using TEAD1 Rabbit polyclonal antibody (STJ115329).



Immunohistochemistry analysis of TEAD1 in paraffin-embedded mouse liver using TEAD1 Rabbit polyclonal antibody (STJ115329) at dilution of 1:100 (40x lens). Perform high pressure antigen retrieval with 10 mM citrate buffer pH 6.0 before commencing with immunohistochemistry staining protocol.



Immunohistochemistry analysis of TEAD1 in paraffin-embedded human breast cancer using TEAD1 Rabbit polyclonal antibody (STJ115329) at dilution of 1:100 (40x lens). Perform high pressure antigen retrieval with 10 mM citrate buffer pH 6.0 before commencing with immunohistochemistry staining protocol.

This product is suitable for in-vitro studies under the RESEARCH USE ONLY [RUO] licence. This product must not be used as for diagnostic or other medical purposes.  
St John's Laboratory Ltd, Knowledge Dock Business Centre, University Way, London, E16 2RD | Tel: 0208 223 3081