

Anti-PSMC3 antibody (1-180) (STJ115308)

STJ115308

GENERAL INFORMATION

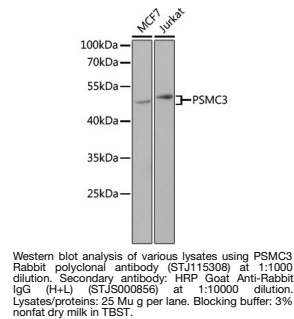
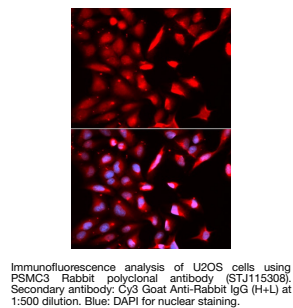
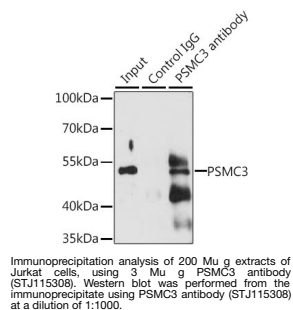
Product Type	Primary antibodies
Short Description	
Applications	WB/IF/ICC/IP/ELISA
Host/Source	Rabbit
Reactivity	Human

PRODUCT PROPERTIES

Clonality	Polyclonal
Clone ID	
Concentration	Lot specific
Conjugation	Unconjugated
Purification	Affinity purification
Dilution	WB:1:500-1:2000
Range	IF/CC:1:50-1:200
	IP:0.5 Mu g-4 Mu g antibody for 200 Mu g-400 Mu g extracts of whole cells
	ELISA:Recommended starting concentration is 1 Mu g/mL. Please optimize the concentration based on your specific assay requirements
Formulation	PBS with 0.02% Sodium Azide, 50% Glycerol, pH 7.3.
Isotype	IgG
Storage	Store at-20°C for up to 1 year from the date of receipt, and avoid repeat freeze-thaw cycles.
Instruction	

TARGET INFORMATION

Gene ID	5702
Gene Symbol	PSMC3
Uniprot ID	PRS6A_HUMAN
Immunogen	
Immunogen Region	1-180
Specificity	Recombinant fusion protein containing a sequence corresponding to amino acids 1-180 of human PSMC3 (NP_002799.3).
Immunogen Sequence	MEEGGRDKAPVQPQQSPAAA PGGTDEKPSGKERRDAGDKD KEQELSEEDKQLQDELEMLV ERLGEKDTSLYRPALEELRR QIRSSSTTSMTSVPKPLKFLR PHYGKLKEIYENMAPGENKR FAADIISVLAMTMSGERECL KYRLVGSQEELASWGHEYVR HLAGVEVAKEWQELDDAEKVQ



This product is suitable for in-vitro studies under the RESEARCH USE ONLY [RUO] licence. This product must not be used as for diagnostic or other medical purposes.
St John's Laboratory Ltd, Knowledge Dock Business Centre, University Way, London, E16 2RD | Tel: 0208 223 3081