

Anti-POLR2H antibody (1-150) (STJ115302)
STJ115302

GENERAL INFORMATION

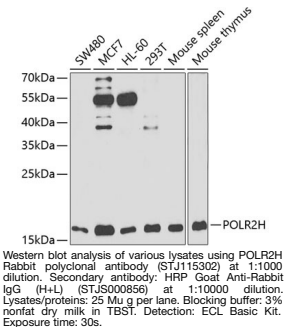
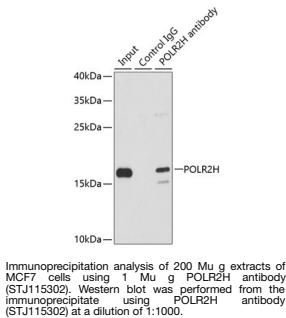
| | |
|--------------------------|--------------------|
| Product Type | Primary antibodies |
| Short Description | |
| Applications | WB/IP/ELISA |
| Host/Source | Rabbit |
| Reactivity | Human/Mouse |

PRODUCT PROPERTIES

| | |
|----------------------------|---|
| Clonality | Polyclonal |
| Clone ID | |
| Concentration | Lot specific |
| Conjugation | Unconjugated |
| Purification | Affinity purification |
| Dilution | WB:1:500-1:2000 |
| Range | IP:0.5 Mu g-4 Mu g antibody for 200 Mu g extracts of whole cells ELISA:Recommended starting concentration is 1 Mu g/mL. Please optimize the concentration based on your specific assay requirements. |
| Formulation | PBS with 0.02% Sodium Azide, 50% Glycerol, pH 7.3. |
| Isotype | IgG |
| Storage Instruction | Store at -20°C for up to 1 year from the date of receipt, and avoid repeat freeze-thaw cycles. |

TARGET INFORMATION

| | |
|---------------------------|---|
| Gene ID | 5437 |
| Gene Symbol | POLR2H |
| Uniprot ID | RPAB3_HUMAN |
| Immunogen | |
| Immunogen Region | 1-150 |
| Specificity | Recombinant fusion protein containing a sequence corresponding to amino acids 1-150 of human POLR2H (NP_006223.2). |
| Immunogen Sequence | MAGILFEDIFDVKDIDPEGK KFDRLVSRHCESESFKMDLI LDVNIQIYPVDLGDKFRLVI ASTLYEDGTLDDGEYNPTDD RPSRADQFEYVMYGVYRIE GDETSTEATRSLAYVSYGG LLMRLQGDANNLHGFEVDSDR VYLLMKKLAF |



This product is suitable for in-vitro studies under the RESEARCH USE ONLY [RUO] licence. This product must not be used as for diagnostic or other medical purposes.
St John's Laboratory Ltd, Knowledge Dock Business Centre, University Way, London, E16 2RD | Tel: 0208 223 3081