

Anti-MECP2 antibody (387-486) (STJ115291)

STJ115291

GENERAL INFORMATION

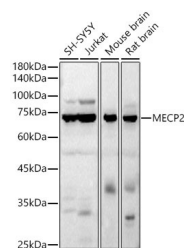
Product Type	Primary antibodies
Short Description	
Applications	WB/IF/ICC/ELISA
Host/Source	Rabbit
Reactivity	Human/Mouse/Rat

PRODUCT PROPERTIES

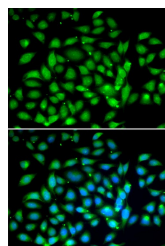
Clonality	Polyclonal
Clone ID	
Concentration	Lot specific
Conjugation	Unconjugated
Purification	Affinity purification
Dilution Range	WB:1:100-1:500 IF/ICC:1:50-1:200 ELISA:Recommended starting concentration is 1 Mu g/mL. Please optimize the concentration based on your specific assay requirements.
Formulation	PBS with 0.05% Proclin300, 50% Glycerol, pH 7.3.
Isotype	IgG
Storage	Store at -20°C for up to 1 year from the date of receipt, and avoid repeat freeze-thaw cycles.
Instruction	

TARGET INFORMATION

Gene ID	4204
Gene Symbol	MECP2
Uniprot ID	MECP2_HUMAN
Immunogen	
Immunogen Region	387-486
Specificity	A synthetic peptide corresponding to a sequence within amino acids 387-486 of human MECP2 (NP_004983.1).
Immunogen Sequence	PPPPPEPESSEDPTSPPEPQ DLSSVCKEEKMPRGGSLES DGCPKEPAKTQPAVATAATA AEKYKHRGEGERKDIVSSSM PRPNREEPVDSTRTPVTERVS



Western blot analysis of various lysates, using MECP2 antibody (STJ115291) at 1:400 dilution. 293T cells were treated by Lambda-PP mixed solution (1ul) at 30 °C for 30 minutes. Secondary antibody: HRP Goat Anti-rabbit IgG (H+L) (STJSD00856) at 1:10000 dilution. Lysates/proteins: 25 Mu g per lane. Blocking buffer: 3% non-fat dry milk in TBST. Detection: ECL Basic Kit. Exposure time: 10s.



Immunofluorescence analysis of U2OS cells using MECP2 antibody (STJ115291). Blue: DAPI for nuclear staining.

This product is suitable for in-vitro studies under the RESEARCH USE ONLY [RUO] licence. This product must not be used as for diagnostic or other medical purposes.
St John's Laboratory Ltd, Knowledge Dock Business Centre, University Way, London, E16 2RD | Tel: 0208 223 3081