

Anti-HLA-DPB1 antibody (40-100) (STJ115276)
STJ115276

GENERAL INFORMATION

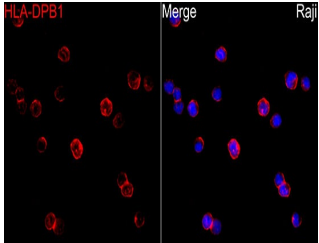
Product Type	Primary antibodies
Short Description	
Applications	WB/IHC-P/IF/ICC/ELISA
Host/Source	Rabbit
Reactivity	Human/Mouse/Rat

PRODUCT PROPERTIES

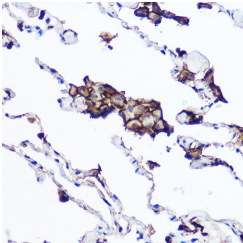
Clonality	Polyclonal
Clone ID	
Concentration	Lot specific
Conjugation	Unconjugated
Purification	Affinity purification
Dilution Range	WB:1:500-1:1000 IHC-P:1:50-1:200 IF/ICC:1:50-1:200 ELISA:Recommended starting concentration is 1 µg/mL. Please optimize the concentration based on your specific assay requirements.
Formulation	PBS with 0.01% Thimerosal, 50% Glycerol, pH 7.3.
Isotype	IgG
Storage Instruction	Store at -20°C for up to 1 year from the date of receipt, and avoid repeat freeze-thaw cycles.

TARGET INFORMATION

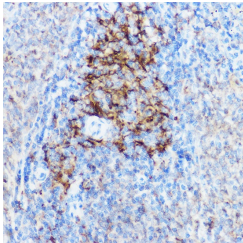
Gene ID	3115
Gene Symbol	HLA-DPB1
Uniprot ID	DPB1_HUMAN
Immunogen	
Immunogen Region	40-100
Specificity	A synthetic peptide corresponding to a sequence within amino acids 40-100 of human HLA-DPB1 (NP_002112.3).
Immunogen Sequence	GRQECYAFNGTQRFLERYIY NREEFARFDSVDVGEFRAVTE LGRPAAEYWNSQKDILEEKR A



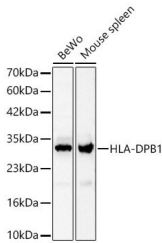
Immunofluorescence analysis of Raji cells using HLA-DPB1 Rabbit polyclonal antibody (STJ115276) at dilution of 1:100 (40x lens). Secondary antibody: Cy3 Goat Anti-Rabbit IgG (H+L) at 1:500 dilution. Blue: DAPI for nuclear staining.



Immunohistochemistry analysis of HLA-DPB1 in paraffin-embedded human lung tissue using HLA-DPB1 Rabbit polyclonal antibody (STJ115276) at a dilution of 1:100 (40x lens). High pressure antigen retrieval was performed with 0.01 M citrate buffer (pH 6.0) prior to immunohistochemistry staining.



Immunohistochemistry analysis of HLA-DPB1 in paraffin-embedded mouse spleen tissue using HLA-DPB1 Rabbit polyclonal antibody (STJ115276) at a dilution of 1:100 (40x lens). High pressure antigen retrieval was performed with 0.01 M citrate buffer (pH 6.0) prior to immunohistochemistry staining.



Western blot analysis of various lysates using HLA-DPB1 Rabbit polyclonal antibody (STJ115276) at 1:1000 dilution. Secondary antibody: HRP Goat Anti-Rabbit IgG (H+L) (STJS000856) at 1:10000 dilution. Lysates/proteins: 25 µg per lane. Blocking buffer: 3% nonfat dry milk in TBST. Detection: ECL Basic Kit. Exposure time: 45s.