

## Anti-ETV1 antibody (80-300) (STJ115267)

STJ115267

### GENERAL INFORMATION

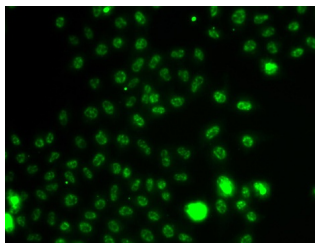
<b>Product Type</b>	Primary antibodies
<b>Short Description</b>	
<b>Applications</b>	IHC-P/IF/ICC/ELISA
<b>Host/Source</b>	Rabbit
<b>Reactivity</b>	Human/Mouse/Rat

### PRODUCT PROPERTIES

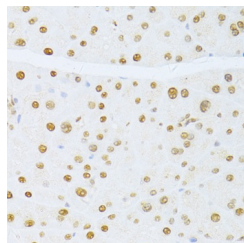
<b>Clonality</b>	Polyclonal
<b>Clone ID</b>	
<b>Concentration</b>	Lot specific
<b>Conjugation</b>	Unconjugated
<b>Purification</b>	Affinity purification
<b>Dilution</b>	IHC-P:1:50-1:200
<b>Range</b>	IF/ICC:1:50-1:200
	ELISA:Recommended starting concentration is 1 $\mu$ g/mL. Please optimize the concentration based on your specific assay requirements.
<b>Formulation</b>	PBS with 0.02% Sodium Azide, 50% Glycerol, pH 7.3.
<b>Isotype</b>	IgG
<b>Storage Instruction</b>	Store at -20°C for up to 1 year from the date of receipt, and avoid repeat freeze-thaw cycles.

### TARGET INFORMATION

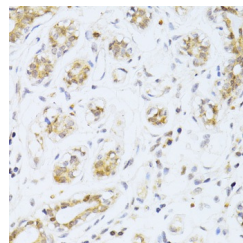
<b>Gene ID</b>	2115
<b>Gene Symbol</b>	ETV1
<b>Uniprot ID</b>	ETV1_HUMAN
<b>Immunogen</b>	
<b>Immunogen Region</b>	80-300
<b>Specificity</b>	Recombinant fusion protein containing a sequence corresponding to amino acids 80-300 of human ETV1 (NP_004947.2).
<b>Immunogen Sequence</b>	AFHGLPLKIKKEPHSPCEI SSACSQEQQPKFSYGEKCLY NVSAYDQKPKQVGMPSNPPT PSSTPVSPPLHHASPNSTHTP KPDRAFPALPPSQSIPDSS YPMDHRFRRLSEPCNSFPP LPTMPREGRPMYQRQMSEPN IPFPQGGFKQEYHDPVYEHN TMVGSAAASQSFPPPLMIKQE PRDFAYDSEVPSCSHYMRQ EGFLAHPSRTEGCMFEKGPR Q



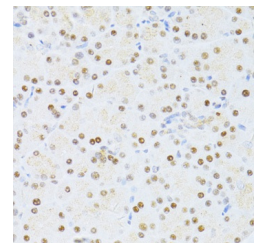
Immunofluorescence analysis of A549 cells using ETV1 antibody (STJ115267).



Immunohistochemistry analysis of paraffin-embedded mouse pancreas using ETV1 antibody (STJ115267) at dilution of 1:100 (40x lens). Perform microwave antigen retrieval with 10 mM PBS buffer pH 7.2 before commencing with immunohistochemistry staining protocol.



Immunohistochemistry analysis of paraffin-embedded human breast cancer using ETV1 antibody (STJ115267) at dilution of 1:100 (40x lens). Perform microwave antigen retrieval with 10 mM PBS buffer pH 7.2 before commencing with immunohistochemistry staining protocol.



Immunohistochemistry analysis of paraffin-embedded rat pancreas using ETV1 antibody (STJ115267) at dilution of 1:100 (40x lens). Perform microwave antigen retrieval with 10 mM PBS buffer pH 7.2 before commencing with immunohistochemistry staining protocol.

This product is suitable for in-vitro studies under the RESEARCH USE ONLY [RUO] licence. This product must not be used as for diagnostic or other medical purposes.  
St John's Laboratory Ltd, Knowledge Dock Business Centre, University Way, London, E16 2RD | Tel: 0208 223 3081