

Anti-DR1 antibody (1-176) (STJ115262)

STJ115262

GENERAL INFORMATION

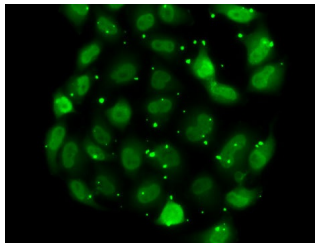
Product Type	Primary antibodies
Short Description	
Applications	WB/IHC-P/IF/ICC/ELISA
Host/Source	Rabbit
Reactivity	Human/Mouse

PRODUCT PROPERTIES

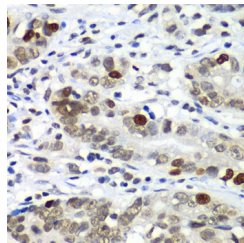
Clonality	Polyclonal
Clone ID	
Concentration	Lot specific
Conjugation	Unconjugated
Purification	Affinity purification
Dilution Range	WB:1:500-1:2000 IHC-P:1:50-1:200 IF/ICC:1:50-1:200 ELISA:Recommended starting concentration is 1 μ g/mL. Please optimize the concentration based on your specific assay requirements.
Formulation	PBS with 0.02% Sodium Azide, 50% Glycerol, pH 7.3.
Isotype	IgG
Storage	Store at -20°C for up to 1 year from the date of receipt, and avoid repeat freeze-thaw cycles.
Instruction	

TARGET INFORMATION

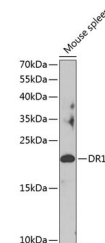
Gene ID	1810
Gene Symbol	DR1
Uniprot ID	NC2B_HUMAN
Immunogen	
Immunogen Region	1-176
Specificity	Recombinant fusion protein containing a sequence corresponding to amino acids 1-176 of human DR1 (NP_001929.1).
Immunogen Sequence	MASSSGNDDDLTIPRAAIK MIKETLPNVRVANDARELVV NCCTEFIHLISSEANEICNK SEKKTISPETHVIALES LGF GSYISEVKEVLQECKTVALK RRKASSRLENLGIPEEELLR QQQLFAKARQQQAELAAQQE WLQMQQAAQQAAQLAASASA SNQAGSSQDEEDDDI



Immunofluorescence analysis of MCF7 cells using DR1 antibody (STJ115262).



Immunohistochemistry analysis of paraffin-embedded human gastric cancer using DR1 antibody (STJ115262) at dilution of 1:100 (40x lens). Perform microwave antigen retrieval with 10 mM PBS buffer pH 7.2 before commencing with immunohistochemistry staining protocol.



Western blot analysis of extracts of mouse spleen, using DR1 antibody (STJ115262) at 1:1000 dilution. Secondary antibody: HRP Goat Anti-Rabbit IgG (H+L) (STJS000856) at 1:10000 dilution. Lysates/proteins: 25 μ g per lane. Blocking buffer: 3% nonfat dry milk in TBST. Detection: ECL Basic Kit. Exposure time: 90s.

This product is suitable for in-vitro studies under the RESEARCH USE ONLY [RUO] licence. This product must not be used as for diagnostic or other medical purposes.
St John's Laboratory Ltd, Knowledge Dock Business Centre, University Way, London, E16 2RD | Tel: 0208 223 3081