

Anti-HHLA2 antibody (30-200) (STJ115227)

STJ115227

GENERAL INFORMATION

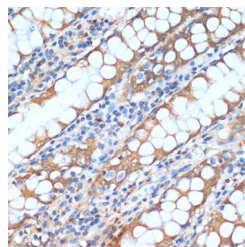
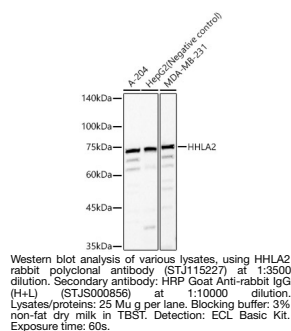
Product Type	Primary antibodies
Short Description	
Applications	WB/IHC-P/ELISA
Host/Source	Rabbit
Reactivity	Human

PRODUCT PROPERTIES

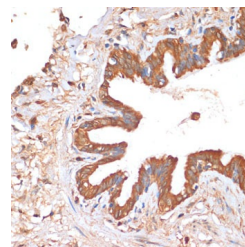
Clonality	Polyclonal
Clone ID	
Concentration	Lot specific
Conjugation	Unconjugated
Purification	Affinity purification
Dilution	WB:1:1000-1:5000
Range	IHC-P:1:50-1:200 ELISA:Recommended starting concentration is 1 μ g/mL. Please optimize the concentration based on your specific assay requirements.
Formulation	PBS with 0.05% Proclin300, 50% Glycerol, pH 7.3.
Isotype	IgG
Storage Instruction	Store at -20°C for up to 1 year from the date of receipt, and avoid repeat freeze-thaw cycles.

TARGET INFORMATION

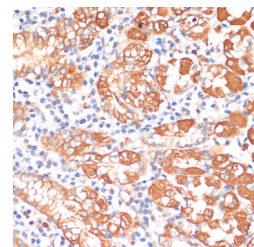
Gene ID	11148
Gene Symbol	HHLA2
Uniprot ID	HHLA2_HUMAN
Immunogen	
Immunogen Region	30-200
Specificity	Recombinant fusion protein containing a sequence corresponding to amino acids 30-200 of human HHLA2 (NP_009003.1).
Immunogen Sequence	IYVPMNEQIVIGRLDEIIL PSSFERGSEVVIHWKYQDSY KVHSYYKGSDHLESQDPRYA NRTSLFYNEIQNGNASLFFR RVSLLEDEGIYTCYVGTAIQV ITNKVVLKVGVLTPVMKYE KRNTNSFLICSVLSVYPRPI ITWKMDNTPISENNMEETGS LDSFSINSPLN



Immunohistochemistry analysis of paraffin-embedded human colon using HHLA2 antibody (STJ115227) at dilution of 1:100 (40x lens). Perform microwave antigen retrieval with 10 mM PBS buffer pH 7.2 before commencing with immunohistochemistry staining protocol.



Immunohistochemistry analysis of paraffin-embedded human lung using HHLA2 antibody (STJ115227) at dilution of 1:100 (40x lens). Perform microwave antigen retrieval with 10 mM PBS buffer pH 7.2 before commencing with immunohistochemistry staining protocol.



Immunohistochemistry analysis of paraffin-embedded human stomach using HHLA2 antibody (STJ115227) at dilution of 1:100 (40x lens). Perform microwave antigen retrieval with 10 mM PBS buffer pH 7.2 before commencing with immunohistochemistry staining protocol.