

Anti-PDPN antibody (99-237) (STJ115226)

STJ115226

GENERAL INFORMATION

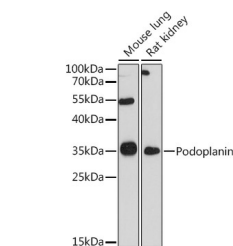
Product Type	Primary antibodies
Short Description	
Applications	WB/IHC-P/ELISA
Host/Source	Rabbit
Reactivity	Human/Mouse/Rat

PRODUCT PROPERTIES

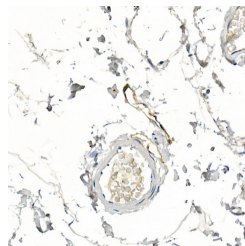
Clonality	Polyclonal
Clone ID	
Concentration	Lot specific
Conjugation	Unconjugated
Purification	Affinity purification
Dilution Range	WB:1:500-1:1000 IHC-P:1:20-1:50 ELISA:Recommended starting concentration is 1 µg/mL. Please optimize the concentration based on your specific assay requirements.
Formulation	PBS with 0.02% Sodium Azide, 50% Glycerol, pH 7.3.
Isotype	IgG
Storage	Store at -20°C for up to 1 year from the date of receipt, and avoid repeat freeze-thaw cycles.
Instruction	

TARGET INFORMATION

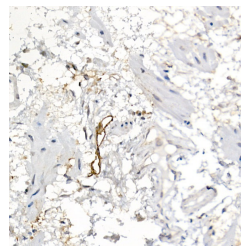
Gene ID	10630
Gene Symbol	PDPN
Uniprot ID	PDPN_HUMAN
Immunogen	
Immunogen Region	99-237
Specificity	Recombinant fusion protein containing a sequence corresponding to amino acids 23-131 of human Podoplanin (NP_006465.3). ASTGQPEDDTETTGLEGGVA MPGAEDDVTPGTSEDYKYS GLTTLVATSVNSVTGIRIED LPTSESTVHAQEQSPSATAS
Immunogen Sequence	NVATSHSTEKVDGDTQTTVE KDGLSTVTL



Western blot analysis of extracts of various cell lines, using Podoplanin antibody (STJ115226) at 1:1000 dilution. Secondary antibody: HRP Goat Anti-rabbit IgG (H+L) (STJ5000856) at 1:10000 dilution. Lysates/proteins: 25 µg per lane. Blocking buffer: 3% non-fat dry milk in TBST. Detection: ECL Basic Kit. Exposure time: 90s.



Immunohistochemistry analysis of paraffin-embedded human colon tissue using Podoplanin rabbit polyclonal antibody (STJ115226) at dilution of 1:20 (40x lens). Perform high pressure antigen retrieval with 10 mM citrate buffer pH 6.0 before commencing with immunohistochemistry staining protocol.



Immunohistochemistry analysis of paraffin-embedded human esophagus tissue using Podoplanin rabbit polyclonal antibody (STJ115226) at dilution of 1:20 (40x lens). Perform high pressure antigen retrieval with 10 mM citrate buffer pH 6.0 before commencing with immunohistochemistry staining protocol.

This product is suitable for in-vitro studies under the RESEARCH USE ONLY [RUO] licence. This product must not be used as for diagnostic or other medical purposes.

St John's Laboratory Ltd, Knowledge Dock Business Centre, University Way, London, E16 2RD | Tel: 0208 223 3081